



N I A G A R A ' S S O U T H C O A S T

PORT COLBORNE

VISITOR'S GUIDE 2019/2020



1-888-PORTFUN | @cityofportcolborne | portcolborne.ca



CONTENTS



PORT COLBORNE

FIND US, TALK TO US, AND FOLLOW US:



IN PERSON

Port Colborne Visitor Information Centre
76 Main Street West



CITY HALL

66 Charlotte Street



BY PHONE

905-834-5722 | 1-888-PORT-FUN
City Hall: 905-835-2900



ONLINE:



Like Us on Facebook

@cityofportcolborne

@tourismportcolborne



Follow Us on Twitter

Twitter.com/portcolborne

@portcolborne

@PCTourism



Follow Us on Instagram

@cityofportcolborne



Subscribe to our YouTube Channel

Youtube.com/cityofportcolborne



TripAdvisor

Tripadvisor.ca/Tourism-g499288-

Port_Colborne_Ontario-Vacations.html

PUBLISHER

AdFuel Media Inc.

PRESIDENT & CEO

Daniel A. Pasco

ACCOUNT EXECUTIVES

Rebecca Farthing, Katelyn Lococo

BUSINESS DEVELOPMENT MANAGER

David Mace

EDITOR

Martine Mackenzie

CREATIVE DIRECTOR

Darryl Grossi

GRAPHIC DESIGNER

Melissa Browne

TO ADVERTISE PLEASE CALL

905-356-7283 or 1-877-888-2825



facebook.com/adfuelmediainc



@adfueledmediainc



@adfueledmedia



todaymagazine.ca

Cover photo: Sugarloaf Marina

Back cover photo: Welland Canal

Some photography by J.T. Lewis.

Published by City of Port Colborne
& AdFuel Media Inc. No part of this
publication may be reproduced without
written consent of the publishers.



Welland Canal

Welcome to Port Colborne

MAKE THE MOST OF YOUR VISIT!

The Visitor Information Centre is located in historic Humberstone Hall on Main Street. Our friendly visitor information centre staff can assist you with directions, travel tips, itinerary ideas, dining suggestions, details about attractions, or simply some local history. Pick up free maps, guides, brochures and the latest information on events.

TABLE OF CONTENTS

WELCOME

Mayor's Message	5
Niagara's South Coast	7
Welland Canal	9
Getting Here	11
Services While You Stay	14

FOOD & DRINK

Farmers' Market	16
Let's Eat	19

LIFESTYLE & CULTURE

History & Heritage	22
Historical & Heritage Tours	26
Experience Culture	28
Stroll, Shop & Relax!	32

ACTIVE TRAVELLER

Hit the Trails	34
Hit the Links	36
Gone Fishing	38
Sugarloaf Marina	40

THE GREAT OUTDOORS

Fun in the Sun	42
Vale Health & Wellness Centre	44
Attractions & Activities	46
Play in Our Backyard	50

STAY.PLAY.EXPLORE.

Stay Here	52
Community Calendar	56
May We Suggest	65
Maps	66

#PORTicipate with us

 @CITYOFPORTCOLBORNE
@TOURISMPORTCOLBORNE

 @PORTCOLBORNE
@TOURISMPORTCOLBORNE

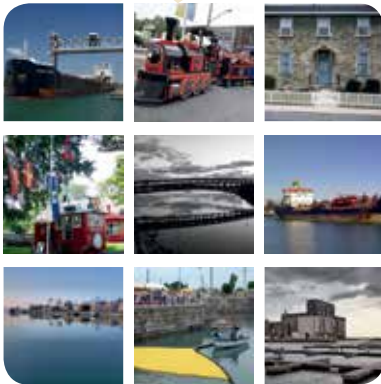
 @CITYOFPORTCOLBORNE

 TRIPADVISOR.CA/ TOURISM-
G499288-PORT_COLBORNE

FOLLOW, RATE OR TAG US!

 Instagram

@cityofportcolborne
#PortColborne
#NiagaraSouthCoast
#PORTicipate



VISIT US ON FACEBOOK AND
TRIP ADVISOR FOR TIPS ON
WHERE TO EAT, PLAY AND STAY
IN PORT COLBORNE.




MUST FOLLOWS

PORT COLBORNE HISTORICAL
& MARINE MUSEUM

 @PORTCOLBORNEHISTORICALMARINEMUSEUM

 @PORTMUSEUM

 @PORTCOLBORNEMUSEUM

PORT COLBORNE PUBLIC LIBRARY

 @PORTCOLBORNEPUBLICLIBRARY

 @PORTCOLBORNELIB

 @PORTCOLBORNELIB

SUGARLOAFMARINA

 @SUGARLOAFMARINA

 @CITYOFPORTCOLBORNE - SUBSCRIBE TO OUR
CHANNEL TO WATCH SEASON 3 OF #DOCKTALK!

HOW WILL YOU #PORTicipate?



Welcome



Welcome from the Mayor's Office



On behalf of members of City Council and the citizens of the City of Port Colborne, we welcome you to our City on the Lake Erie shore and Niagara's South Coast.

Port Colborne has a comfortable lifestyle for residents and visitors of all ages – scenic trails and sandy beaches; world-class fishing and boating; unique shopping and dining; live theatre and festivals. Come, #PORTicipate, enjoy and return often.

Mayor William C. Steele



Sugarloaf Marina



Algoport Skate & BMX Park



H.H. Knoll Lakeview Park
Discovery Spray Pad



Sugarloaf Marina



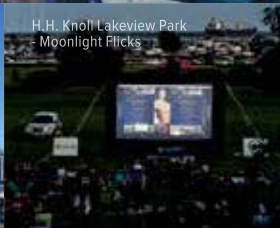
Lighthouse



West Street Promenade



West Street Promenade



H.H. Knoll Lakeview Park
Moonlight Picnic



Canal Days - Boat Parade of Lights



Welcome



Niagara's South Coast



Sugarloaf Marina

A vibrant and impressive city located on the south shore of the scenic Niagara Region. Port Colborne is a community embedded in marine heritage and welcoming hospitality. With a generous climate, ample beachfront, and cultural attractions, Port Colborne is truly a destination you must visit!

Throughout the year, the uniqueness of Port Colborne is showcased as visitors and residents stroll along the Welland Canal, pop in and out of the shops and boutiques, immerse themselves in the local arts and culture, and relax on the beach. Visitors to Niagara's South Coast can expect a getaway that is relaxing, fun and takes full advantage of everything this area has to offer. Experience Port Colborne – experience what you expect life to offer on Niagara's South Coast.

- Charming shopping districts
- A picturesque marina, offering boating, fishing and recreation
- A vibrant arts and culture community featuring galleries, studios, museum, library and theatre
- Numerous heritage sites
- Scenic trails for hiking, biking and walking
- An energetic festivals and events scene
- Close to world-class attractions throughout Niagara

history



Welland Canal



Port Colborne and the Welland Canal share a closely entwined history with one another. Port Colborne was established as a settlement when the Welland Canal was extended from Port Robinson to Lake Erie in 1833. The presence of the canal through the middle of the community has shaped the local economy. To this day, some of Port Colborne's major businesses rely on the canal for cargo movement.

Port Colborne is the only location along the Welland Canal to follow the original canal route. Visitors can see remnants of earlier canals right next to modern ships or check out the Clarence Street Lift Bridge, one of three remaining lift bridges in operation on the Welland Canal. View walls of the old guard locks from the second and third Welland Canals and abutments of a swing bridge that once crossed the canal.

The Promenade (along the side of the Welland Canal) is an excellent place to watch ships pass into Lake Erie, or visit Lock 8 Gateway Park to see ships from an elevated viewing platform as they pass through the southernmost lock on the Welland Canal and the second longest canal lock in the world! Lock 8 Gateway Park also features a uniquely designed "Algoport" Skate & BMX Park which has been styled to resemble a freight ship.

Visitniagarawellandcanal.com



Getting Here



Lighthouse



Marshville Heritage Society Presents
**31ST ANNUAL
 MARSHVILLE
 HERITAGE FESTIVAL
 ARTS & CRAFT SHOW**
featuring over 130 high quality juried crafters

WWW.MARSHVILLEHERITAGEFESTIVAL.COM



LABOUR DAY WEEKEND

Saturday August 31st to Monday September 2nd
 from 10 am to 5 pm

Seniors 65+: \$5 on Saturday only

Adults: \$6

Children under 10: Free

FREE PARKING

(NO DOGS ALLOWED)

Wainfleet Village Sports Complex

Hwy #3 West. Minutes from Port Colborne



DRIVING TO PORT COLBORNE

Port Colborne is an hour from the Greater Toronto Area (GTA), 30 minutes from Niagara Falls and St. Catharines, and only 20 minutes from the Peace Bridge crossing between Fort Erie, Ontario and Buffalo, New York. Hwy 3, a heritage highway linking Niagara with the agricultural communities of Southwestern Ontario and the Windsor-Detroit border crossing, bisects the community. Visitors driving from Toronto via the QEW can reach Port Colborne by taking Hwy. 406 south to Hwy. 140. Regional Road 20 links Niagara Falls with Hwy. 406 and Hwy. 140.



NAVIGATING TO PORT COLBORNE

Port Colborne is located at 42° 53'N, 79° 14'W. Large pleasure craft may use the Welland Canal connecting Lake Ontario with Lake Erie. The canal is open to navigation from March to December. When approaching the harbour from the lake or canal, use VHF ch#68 for navigational and docking assistance.

For additional boating information, contact any of the following:

- Sugarloaf Marina: 905-835-6644
- St. Lawrence Seaway Authority: 905-835-5441
- Environment Canada marine weather information: 416-661-0104



2019 SEASON

JUNE 12 - SEPTEMBER 22

SUBSCRIPTIONS STARTING AT \$135

Fair and Square (2018)
 Matthew Oliver, David Rosser,
 Precious Chong and Leah Oster

JUNE 12 - 23

JULY 3 - 14

JULY 24 - AUGUST 4

AUGUST 14 - 25

SEPTEMBER 11 - 22

SHOP ONLINE 24/7 showboattheatre.ca

296 Fielden Ave. (Access off Carter Street) | BOX OFFICE (905) 834-0833



Welcome



CYCLING TO PORT COLBORNE

Port Colborne is located at the intersection of the Great Trail, a.k.a. Friendship Trail, the Welland Canals Parkway Trail, and a spur of the Trans Canada Trail. This point also serves as the southwest corner of the Greater Niagara Circle Route. Cyclist friendly Port Colborne is a major destination for both recreational and experienced cyclists alike.

For more information, call 1-888-PORT-FUN
 or visit any of the following helpful websites:
portcolborne.ca | niagaracyclingtourism.com;
biketrain.ca | niagararegion.ca/exploring/cycle



RAIL AND BUS SERVICES



Port Colborne is served by Megabus three times a day on its Toronto to Niagara route. The stop is in Downtown Port Colborne at King Street and Clarence Street, and tickets can be purchased on-line at ca.megabus.com. GO Transit provides regular service to Toronto through its GO bus service several times a day. The GO bus currently stops in St. Catharines and Niagara Falls. Daily rail service to Toronto is provided by Via Rail through train stations in St. Catharines and Niagara Falls.

VIA/GO times can be found on the Via Rail schedule.
 Amtrak also serves these stations with daily rail service to New York City.
 • Megabus: 1-866-488-4452 • megabus.com
 • ViaRail: 1-888-842-7245 • viarail.ca
 • Amtrak: amtrack.com



Services While You Stay



Port Colborne Public Library

DID YOU KNOW?



Port Colborne became Ontario's First Fair Trade City in 2009 and are celebrating 10 years in 2019! We're proud of our status and committed to making our world a better place by offering, using and educating the public about fairly traded products. Fair trade represents a partnership based on dialogue, transparency, and respect, which seeks greater equity in international trade.

CITY SERVICES

PORT COLBORNE CITY HALL

Open Monday to Friday
8:30 a.m. - 4:30 p.m.
66 Charlotte Street
905-835-2900
portcolborne.ca

PORT COLBORNE VISITOR INFORMATION CENTRE, HUMBERSTONE HALL

76 Main Street West at Mellanby
905-834-5722
1-888-PORT-FUN
(767-8386)

PORT COLBORNE PUBLIC LIBRARY

310 King Street
905-834-6512
portcolborne.library.org
@PortColbornePublicLibrary
@PortColborneLib
@PortColborneLib

PORT COLBORNE HISTORICAL & MARINE MUSEUM and HERITAGE VILLAGE

Open May to December,
12 p.m. - 5 p.m.
Free Admission
280 King Street
905-834-7604
portcolborne.ca
@PortColborneHistorical
MarineMuseum
@PortMuseum
@PortColborneMuseum

COMMUNITY AND SOCIAL SERVICES INFORMATION

Dial 211 or www.211ontario.ca
211 is a helpline and online database of Ontario's community and social services.

ROADS AND WEATHER / TRAVEL INFORMATION

Dial 511 or mto.gov.on.ca/english/traveller/trip/index.html

511 provides 24/7/365 access to Ministry of Transportation road information on provincially maintained highways.

EMERGENCY PHONE NUMBERS

All Life Threatening Situations
911

Niagara Regional Police Services (NRPS)
905-735-7811

Ontario Provincial Police (OPP)
1-888-310-1122

Fire Department
905-834-4512

Ambulance
905-835-5029

Assaulted Women's Help Line
1-866-863-0511

Kids Help Phone
1-800-668-6868

MEDICAL FACILITIES

Port Colborne Urgent Care Centre
260 Sugarloaf Street
(Entrance at west end)
905-834-4501

BANKS AND CREDIT UNIONS

Each of the major chartered banks in Canada have branches in Port Colborne offering full services of personal

and commercial banking. Two credit unions also serve the Port Colborne area, including one offering bilingual service.

Bank of Montreal (BMO)
287 West Side Road
905-835-2232

Canadian Imperial Bank of Commerce (CIBC)
56 Clarence Street
905-834-3671

Desjardins Caisse Populaire
57 Clarence Street
905-834-4811

Meridian Credit Union
43 Clarence Street
905-834-6764

Royal Bank of Canada (RBC)
59 Clarence Street
905-835-1153

Scotiabank
105 Clarence Street
905-834-7700

TD Canada Trust
136 Clarence Street
905-835-2437

BEER & LIQUOR SALES

The Beer Store
420 Catharine Street
905-834-3425

LCBO
144 Clarence Street
905-834-4643

DRUG STORES

Boggio's IDA
200 Catharine Street
905-834-3514

Matheson's Drug Store
427 Steele Street
905-835-0000

Port Medical Pharmacy
254 Killaly Street West
905-834-7678

Shoppers Drug Mart
77 Clarence Street
905-834-4046

GROCERY STORES

Bodner's Market
439 Hwy. 3 East
905-835-1554

Food Basics:
124 Clarence Street
905-834-8800

Brandon's No Frills
53 West Side Road
905-834-5577

Sobeys
287 West Side Road
905-834-0220

POSTAL SERVICES

Port Colborne Post Office
184 Elm Street
905-834-3331

TRANSPORTATION SERVICES

A Premier Taxi
905-835-8000

Port Colborne Taxi
905-835-2424

Port Colborne Transit
portcolborne.ca/page/Port_Colborne_Transit

CAA/AAA Road Service
1-800-CAA-HELP
905-684-4396

Buffalo Niagara International Airport
buffaloairport.com

Megabus
1-866-488-4452
megabus.com

John C. Munro Hamilton International Airport
1-905-679-1999
hamiltonairport.com

Niagara Airbus
1-800-268-8111
niagaraairbus.com

Toronto Pearson International Airport
1-416-247-7678
1-416-776-5100
gtaa.com

VIA Rail
1-888-842-7245
viarail.ca

VETERINARY SERVICES

Clarence Street Veterinary Clinic
167 Clarence Street
905-835-1600

Port Colborne Animal Hospital
503 Elm Street
905-835-6962

REALTORS

Re/Max
149 Clarence Street
905-834-7777

Robins
289-821-6378

Royal LePage
368 King Street
905-834-9000



Farmers' Market



Port Colborne Farmers' Market

Niagara has long been known for the quality of its tender fruits and vegetables and here in Port Colborne, the market provides a connection to our community, the seasons and our farmers as well as providing excellent health and environmental benefits. With over 60 vendors from throughout the region providing fresh-from-the-farm, ripe-off-the-trees, local produce, meats, honey, baked goods and a variety of colourful flowers and bedding plants – shopping at the Port Colborne Farmers' Market brings out inspiration, imagination and creativity in everyone!

We invite you to come meet our vendors every Friday morning from 6 a.m. - 12 p.m. (Victoria Day in May to Thanksgiving in October), 7 a.m. - 12 p.m. (Thanksgiving in October to Victoria Day in May) at the Market Square across from City Hall. Come learn about our local products, meet the individuals who provide them and leave with a few tips or even a recipe or two!

For more information, please contact the City's Market Clerk at 905-835-2900 ext. 124.



PRODUCE	JUNE	JULY	AUG	SEPT	OCT	NOV	DEC
Apples			•	•	•	•	
Blueberries		•	•	•			
Cabbage	•	•	•	•	•	•	•
Cherries	•	•					
Corn		•	•	•	•		
Nectarines			•	•			
Peaches		•	•	•			
Pears			•	•	•		
Raspberries		•	•	•			
Strawberries	•	•					
Squash			•	•	•	•	•
Tomatoes		•	•	•	•		

The
WAINFLEET RESTAURANT

Newly renovated - over 15 years serving up great meals
 Open for Breakfast, Lunch & Dinner - Seven days a week
 Sunday Brunch 9:00am to 2:00pm

15 Minutes from Port Colborne, Pelham, Welland & Dunnville
 42805 HWY 3 Chamber's Corner, Wainfleet ON
 905.899.2792 | 1.888.899.2792 | wainmotel.com

Open Tuesday 4:30pm - 9:00pm
 Wednesday through Saturday
 11:30am - 10:00pm

264 King St., Port Colborne, ON
 905.834.6000 | thesmokinbuddha.com

\$4
 Slice of Pie
 & a Coffee
 Handmade Fruit
 & Savoury Pies

148 West Street, Port Colborne
 www.thepieguysbakery.com

**WE
 DELIVER
 in town**

YOU CAN NOW DINE-IN OUR FULLY LICENSED RESTAURANT.
 905-834-1441 | 281 KING STREET PORT COLBORNE



Let's Eat



DINE WITH PORT COLBORNE'S BEST!

There's no better way to discover a place than by tasting it. Experience the unique restaurants and cafes where the locals like to eat. Serving regional and global favourites. Port Colborne's restaurants offer the perfect recipes for a foodies' paradise. No matter what type of cuisine you may be craving, you'll find plenty of flavours to savour in Port Colborne.

Complete listing on the following pages.

LEGEND



LICENSED



PATIO



RESERVATIONS



CHILDREN
WELCOME



WHEELCHAIR
ACCESSIBLE



BUS
PARKING



TEAMS
WELCOME

CASUAL DINING

BELMONT HOTEL
175 King Street
905-834-4273



BOSTON PIZZA
490 Empire Road
905-894-1991



BREAKFAST BARN
145 Main Street West
289-836-7930



**BREAKWALL BREWING
COMPANY**
46 Clarence Street
289-836-8181



**BREMFIELD'S CAFÉ,
BAKERY & FLORAL
MARKET**
91 Main Street West
289-836-9863



**BY THE WATER CAFÉ
AND CATERING**
(Seasonal)
250 Pleasant Beach Road
905-961-0447



**CANALSIDE
RESTAURANT**
232 West Street
905-834-6090



**CONCESSI'S
LONG BEACH
MARKET & DINER**
(Seasonal)

12190 Lakeshore Road,
Wainfleet
905-899-9992



CORNER CAFÉ
1609 Hwy. 3 Wainfleet
905-899-1586



DE LUCA FINE FOODS
35 Prosperity Avenue
905-835-1953



DJ'S RD.HOUSE
(Seasonal-Dinner only)
2187 Lakeshore Road West
Wainfleet
905-899-1911



**DON CHERRY'S
SPORTS BAR & GRILL**
(Seasonal)
3 Marina Drive
905-834-1500



DRIFTERS
471 Main Street West
905-834-3333



EH! AMIGOS CANTINA
20 Clarence Street
905-835-8989



**FLYING SQUIRREL
BISTRO INC.**
27 Main Street West
289-836-8382



**HARBOURFRONT INN
BAR AND GRILL**
266 West Street
905-835-8621



**LONG BEACH
COUNTRY CLUB**
(Seasonal)
13054 Lakeshore Road,
Wainfleet
289-821-6888



LOTUS GARDEN
182 West Street
905-835-2552



**MELINA'S FAMILY
RESTAURANT**
115 Main Street West
905-835-2755



MINOR FISH AND CHIPS
176 West Street
905-834-9232



MOE'S TAP AND WINGS
190 Main Street East
905-835-1963



PARKER'S PUB & EATERY
247 Welland Street
289-836-8618



**PORT COLBORNE
COUNTRY CLUB**
(Seasonal)
11260 Golf Course Road
Wainfleet
905-835-1311



QUEEN'S HOTEL
19 Nickel Street
905-834-7349



REEB HOUSE
2841 Hwy. #3 East
905-834-5401



S-BEND RESTAURANT
5801 Hwy. #3 East
905-894-4072



**SAN MARCO'S
RISTORANTE**
164 Clarence Street
905-834-1345



THE GARDEN HOUZZ
10414 Lakeshore Rd. W
905-834-5031



**THE GOURMET
RESTAURANT**
495 Main Street West
905-834-6683



**THE LOCK WOOD
FIRED PIZZA**
11 Clarence Street
289-836-9700



**THE PIE GUYS
BAKERY & CAFE**
148 West Street
905-788-4743



THE SMOKIN' BUDDHA
265 King Street
905-834-6000



**THE SPOT
BAR AND GRILL**
225 Main Street West
289-478-1194



**TIE PINK RESTAURANT
& TAVERN**
17 Charlotte Street
905-835-8377



**TWO BY FOUR
RESTAURANT**
72004 Regional Road
Wainfleet
905-899-2260



**UNION JACK
FISH & CHIPS**
230 Main Street West
905-899-2792



**WALTER'S AND
NEPTUNES
RESTAURANT
AND BANQUETS**
258 West Street
905-835-1791



**WAINFLEET
RESTAURANT**
42805 Hwy. 3, Wainfleet
905-899-2792



**WHISKY RUN
GOLF CLUB**
631 Lorraine Road
905-835-6864



QUICK STOPS

**ARCHIE'S SUBS
AND EATERY**
95 Clarence Street
905-834-8979



BEACH SIDE POUTINE
(Seasonal)
49 Empire Road
905-835-2611



**BIG MOMMA'S
FRESH CUT FRIES**
(Seasonal)
27 Main Street East
289-990-0379



BLUEBERRY LANE
4224 Hwy 3
905-894-4945



CHRISTOPHER'S PIZZA
94 Killaly Street West
905-834-5000



DAIRY QUEEN
73 Main Street East
905-834-9621



**DAWG'S BURGERS
& FRIES**
(Seasonal)
5 Marina Street
905-650-1651



DINNY'S TRAIL STOP
(Seasonal)
591 Sherkston Road
905-834-9644



DONUT DINER
51986 Forks Road
Wainfleet
905-899-2132



**HARVEY'S /
SWISS CHALET**
575 Main Street West
905-834-7629



**HELLO'S FAMILY
RESTAURANT**
(Seasonal)
5113 Hwy. #3 East
905-835-2755



KFC
349 King Street
905-835-2611



**LA DOLCE VITA
BAKERY**
331 Main Street West
289-836-9600



LITTLE CAESAR'S
287 West Side Road
905-835-7765



**MAGICAL
MEDITERRANEAN
MUNCHIES**
244 Killaly Street West
905-835-2525



MARKET CAFÉ
78 Clarence Street
905-835-6946



**MCDONALD'S
RESTAURANT**
569 Main Street West
905-834-9644



PAZZO'S PIZZA
42095 Hwy 3
Wainfleet
905-899-7000



SUBWAY
230 Main Street West
905-835-0200

136 Clarence Street
905-834-1657

550 Elizabeth Street
289-836-8222



**SUPER MARIO'S
PIZZERIA**
281 King Street
905-834-1441



**THE GREEN APPLE
COFFEE HOUSE**
162 West Street #2
905-834-7528



THE HEARTBEAT CAFÉ
72 Charlotte Street
905-329-8266



THE HUNGRY PUTTER
12203 Brawn Road
Wainfleet
(Seasonal)
905-899-1155



THE SAUCY POT
148 Killaly Street East
289-836-9295



TIM HORTONS
297 Main Street East
905-834-8857

429 Main Street West
905-834-7484

287 West Side Road
905-834-1769



WENDY'S
90 Clarence Street
365-457-0021



**DISCOVER
A LOCAL
FAVORITE
TODAY!**

**WHETHER IT'S A
QUICK STOP OR A
SIT-DOWN MEAL,
GET A TASTE OF
WHAT PORT
COLBORNE
HAS TO OFFER.**



History & Heritage





Solid Comfort: Tales of Tennessee

PORT COLBORNE HISTORICAL & MARINE MUSEUM AND HERITAGE VILLAGE

Museum and Heritage Village, located at 280 King Street in downtown Port Colborne, features a century of heritage buildings in a landscaped setting of historic gardens, pathways, picket fences, and a covered pavilion with picnic tables and park benches. The 1869 Georgian-Revival style Williams Home serves as the main exhibit gallery, interpreting the history of Port Colborne and the Welland Canal through a variety of ever-changing exhibits. The Village includes a Log Schoolhouse, the Sherk-Troup Log Home, the F. W. Woods Blacksmith Shop, Arabella's Tea Room and a Carriage House Gift Shop. The latest addition to the village, a timber frame cabin, houses the Graf Loom. The wheelhouse from the Yvon Dupre tugboat, the lifeboat from the S.S. Hochelaga and the Marine Exhibit Lighthouse form a small marine park within the Museum Village.

Canada's Century Car, the 1901 Neff Steam Buggy, built by Benton Neff in the Neff Foundry in Humberstone which is now part of Port Colborne, is on display in the Museum's Heritage Resource Centre.

Arabella's Tea Room serves afternoon tea with hot homemade tea biscuits, in a 1915 Edwardian Cottage. Open daily from 2 p.m. - 4 p.m., June to September. Christmas Pudding is served during the first week of December.

USED & RARE BOOKS
 145 Main St. West, (Hwy. 3)
 Port Colborne, ON L3K 3V3
 905-834-5323
 info@alphabet-bookshop.com
 Closed Mondays
 Tues – Sat. 10 am – 5 pm
 Sun. Noon – 3 pm

Generous sections for readers
 Mystery, Suspense, Horror,
 Detective Fiction, Thrillers,
 Westerns, Literature, Poetry,
 Canadian Fiction...

Carefully Selected rare books, first editions,
 paper ephemera & local postcards. All in nice,
 clean condition.

Scholarly Sections of Philosophy, Classics, Art,
 History, Architecture, Military, Canadiana, Art...

Small Antiques Local historical artifacts &
 ephemera, vintage & rare items.

USED & RARE BOOKS • SMALL ANTIQUES

Global Style. Global Good.



Beautiful handcrafted pieces alive with culture,
personality and tradition.

7 Clarence St. • Port Colborne, ON
 905-834-6292 • tenthousandvillages.ca

The **L.R. Wilson Heritage Research Archives and Visitors' Centre** provides a space for heritage research as well as a programming space for the Library and Museum. The MacDonald Conference Hall is available for private rentals. Please call for hours of operation. Throughout the year, the Museum hosts many events, including Arabella's Pie Social & History Fair, Canal Days at the Museum and the Grand Old Christmas Festival.

THE MUSEUM, HERITAGE VILLAGE AND GIFT SHOP

Open from May to December

12 p.m. - 5 p.m. daily (including holidays) • Admission: FREE

t: 905-834-7604 • e: museum@portcolborne.ca

f facebook.com/PortColborneHistoricalMarineMuseum

t @PortMuseum

o @portcolbornemuseum

Let a costumed interpreter guide you through the Heritage Village and exhibits every Monday this June, July and August for only \$2 per person.



Arabella's Tea Room

ARABELLA'S TEA ROOM ON THE GROUNDS OF THE PORT COLBORNE HISTORICAL & MARINE MUSEUM

Arabella's Tea Room began in 1977 with the formation of a Museum Auxiliary willing to operate a tea room on a volunteer basis. Arabella's Tea Room was originally a small house, built in 1915, as a rental home on the Williams Estate. Arabella Williams lived in the main house which is now the Museum. The little rental house was deemed to be the perfect location for a tea room, and after much research, it was decided that an Edwardian Era theme for afternoon tea would be ideal in creating an authentic atmosphere. All decided aspects of the tea room were planned in the Edwardian style. After several months of restoration and deliberation, Arabella's Tea Room was officially opened. Lieutenant-Governor Pauline McGibbon cut the opening ribbon, held by Florence Neff Young and H. H. Knoll, on July 1, 1978.

We are grateful for the time and dedication of Arabella's Tea Room volunteers. They are warm and friendly ambassadors of Port Colborne. Please join us for pleasant relaxing experience with homemade tea biscuits, jam, tea, coffee, lemonade, and ice tea in an Edwardian setting.

Open from June 1st to September 30th

2 p.m. - 4 p.m. daily (excluding some holidays)

Admission: \$5 (includes two tea biscuits and a beverage)

For large groups, please contact for bookings:

t: 905-834-7604 • e: museum@portcolborne.ca

f [facebook.com/Arabellas-Tea-Room](https://www.facebook.com/Arabellas-Tea-Room)

t [@ArabellaTeaRoom](https://twitter.com/ArabellaTeaRoom)



Costumed Interpreter - Guided Tours

2019 Exhibits

MAY – NOVEMBER

DEADLY DUST-DOMINION: GRAIN ELEVATOR EXPLOSION 1919

Located at the southern terminus of the Welland Canal, the grain elevator played an important role in the movement of grain through the Great Lakes. This exhibit not only examines this role, but also the tragic fatal explosion that occurred 100 years ago.



MAY - DECEMBER

SOLID COMFORT: TALES OF TENNESSEE

What does Port Colborne have in common with Tennessee? Visit this new exhibit as the fascinating history of the exclusive "Solid Comfort" summer cottage community is revealed through photographs and artifacts from the museum's collection.



TUGGING ALONG:

TUGBOATS ON THE WELLAND CANAL

Narrow channels, small canal locks, and lots of ship traffic on the third Welland Canal meant plenty of business for the tugs and their crews. Peer into the Marine Exhibit Lighthouse to catch a glimpse of this vital part of the canal scene.

NOVEMBER – DECEMBER

BLACK & WHITE CHRISTMAS

Breaking from the traditional colours of the holidays, this exhibit showcases black & white artifacts from the museum's collection. This chic, unique, elegant, and versatile Christmas display is all about style.

URBAN HISTORY WALKING TOURS - WEST ST. AND HUMBERSTONE VILLAGE

Join us Fridays in July and August for our Urban History Walking Tours! Every Friday in July, Archives staff will be leading guided walking tours of West Street, while Fridays in August will feature tours of Humberstone Village along Main Street. The tours highlight some of the interesting history in our urban areas, and intriguing stories from our community's past.

CEMETERY TOURS!

JOIN US AS WE WALK THROUGH HISTORY

L.R. Wilson Heritage Research Archives staff will be offering our popular Cemetery Tours at Overholt and Oakwood Cemeteries in 2019. Tours feature some of the interesting and eclectic stories of the lives of the people buried in the cemeteries, and highlight the fascinating connections between our local community's past and national and international history.

Walking Tours and Cemetery Tours cost \$5 per person, and tickets must be purchased in advance by visiting or calling the Museum at 905-834-7604. The number of tickets available for each tour is limited. Dates and times for the specific tours will be available on our Facebook page. If you have a group of five or more people, we can do a tour just for your group, at our regular rates - call to book.



Historical & Heritage Tours



Tennessee Avenue "Solid Comfort"

TENNESSEE AVE.

Originally established in 1889 as the Humberstone Club or "Solid Comfort," the lakefront homes of Tennessee Avenue are reminiscent of the American South. The gated entrance to Tennessee Ave. is located off Sugarloaf Street, slightly west of the intersection of Sugarloaf Street and Steele Street.

THE INCREDIBLE SHRINKING MILL

The "Incredible Shrinking Mill" is a strange phenomenon produced by interplay of light, shoreline, water, and trees. The closer you get the smaller it appears. Take Cement Road, located at the western edge of Port Colborne, from Hwy. 3 South to Lakeshore Road, turn left (east), and look straight ahead towards Gravelly Bay. The mill looks almost close enough to touch, but as you approach the water, the mill appears to shrink.

PIRATE TOURS

289-700-0261 • pyratesimage.com

Join Captain John Swallow & QM Seika Hellbound for Pirate Lore & Harbour Walks: Real Pirates – Real History. Piracy on the Great Lakes of Canada. Smuggling, shipwrecks, battles, even treasures. Group & private tours available. Walks take place along the canal West Street Port Colborne.

WENDY MALOWANY
ART STUDIO

Fine Art | Commissions | Art Classes
Workshops | Art Parties | Fundraisers

Wendy-Malowany.com

Phone: 905.899.4429
Text/Mobile (289) 823.0354
Email: wendy@wendymalowany.com

THE LOCK
and more than just a pizza place

WOOD FIRED PIZZA

fully licensed

289.836.9700 | www.thelockpizza.com
11 Clarence St., Port Colborne, ON

2019 Museum Events

- April 30** Archives Open Monday to Friday 1 p.m. - 5 p.m.
- May 1** Museum Open Daily 12 p.m. - 5 p.m.
- May 26** 35th Annual Arabella's Pie Social & History Fair, 12 p.m. - 4 p.m.
- June 1** Arabella's Tea Room — Open Daily June - September, 2 p.m. - 4 p.m.
- June 2 - 8** Arabella's Tea for Two, two for the price of one, 2 p.m. - 4 p.m.
- June - August** Guided Tours of Museum Heritage Village and "Tales of Tennessee" every Monday afternoon
- July** West St Urban History Walking Tours every Friday 10 a.m. & 6 p.m.
- August 3 - 4** 41st Annual Canal Days Marine Heritage Festival, 11 a.m. - 5 p.m.
- August** Humberstone Village Urban History Walking Tours every Friday 10 a.m. & 6 p.m.
- September - November** Archives Speakers Series
- December 1** 43rd Annual Grand Old Christmas Festival, 12 p.m. - 4 p.m.
- December 2 - 7** Arabella's Tea Room Christmas Pudding & Sauce, 2 p.m. - 4 p.m.

Free Speaker's Series

The L.R. Wilson Heritage Research Archives will host a free speaker's series Thursday evenings this fall at 286 King Street starting at 7 p.m.

- September 26** "The Challenge of Cooking with War Time Rations"
- October 10** "The Welland Canal Landscape, 1930 - Present"
- October 24** "A History of Tennessee Avenue"
- November 7** "Armchair Cemetery Tour to Honour Military Service"



Experience Culture



Roselawn Centre for the Arts

ROSELAWN CENTRE FOR THE ARTS

The magnificent 1860s Victorian building is home to the Showboat Festival Theatre. Roselawn is also a community centre which is host of internationally acclaimed musicians and The Canadian Authors Series. The Roselawn Centre caters for groups of 30 – 80 for weddings, special occasions, family events and business seminars. Roselawn is easily accessed from any point in the Niagara Peninsula. The Theatre, Administrative Office and Box Office are located in the heart of Port Colborne.

Box Office and Reception Hours

Monday to Friday 9 a.m. - 4:30 p.m., Closed from 12 p.m. - 1 p.m. daily
296 Fielden Avenue, Port Colborne, ON L3K 4T6
905-834-7572 • portcolborne.ca

SHOWBOAT FESTIVAL THEATRE

296 Fielden Avenue (Access off Carter Street)
 905-834-0833
 showboattheatre.ca

Our 2019 playbill will light up the stage with Showboat's trademark sense of humour.

THIS SEASON'S PRODUCTIONS:

SEXY LAUNDRY

Comedy by Michele Riml
 Directed by Derek Ritschel
 June 12 - 23

After twenty-five years of marriage, the emergence of love handles and receding hairlines, Alice and Henry have hit a physical plateau. With a copy of Sex for Dummies in hand, Alice convinces Henry to a weekend of alone time in the hopes of seducing him and unearthing her inner vixen. Henry, however, wants to keep things the way they are — comfortable and easy. Exploring every fantasy from leather to lace, Alice and Henry portray every couple's desire to grow together but maintain individuality. *Adult language

EARLY AUGUST

Comedy by Kate Lynch
 Directed by Mairi Babb
 July 3 - 14

The cast of a small town theatre company is feeling the usual doldrums of a long summer season, and their performances are starting to unravel. The company's stage manager, Teddy, expects a slight performance drop-off, but her cast is heading towards an all-out collapse. Backstage, Teddy must straighten out their messy love lives, living situations and looming unemployment problems, all while the show goes on around them. No matter how bad it gets, one thing is certain — the show must go on!

HURRY HARD

World Premiere Comedy by Kristen Da Silva
 Directed by Sarah Phillips
 July 24 - August 4

When Bill and Sandy's marriage split up, so did their curling team — splintering off into a men's team and a women's team who begrudgingly share the ice at the Stayner Curling Club. Now, a medical emergency has left the men's team short a player the day of the big Regional Bonspiel. If they have any hope of beating neighbouring Meaford and taking the trophy for Stayner, they'll have to call a ceasefire on the war of the sexes and unite as one team.

PRAIRIE NURSE

Comedy by Marie Beath Badian
 Directed by Audrey Dwyer
 August 14 - 25

Two Filipino nurses come to work at a small town Saskatchewan hospital in the late 1960s. Cultural clashes, personality differences, homesickness, and the amorous but dim-witted goalie from the local hockey team complicate the women's lives. Based on the true story of her mother's immigration to Canada, Badian's play is part romantic comedy, part farce, and part cultural history.

LUNENBURG

Comedy by Norm Foster
 Directed by Derek Ritschel
 September 11 - 22

When Iris Oulette inherits a house that she didn't even know existed, she and her close friend, Natalie Whitaker, travel to the town of Lunenburg, Nova Scotia, to have a look at her new property. What follows is a series of world-changing surprises, heart-warming personal transformations, and a fall-down-funny romantic adventure.

ART GALLERIES & CULTURAL ATTRACTIONS

PORT COLBORNE ART CLUB

Bethel Community Center (upstairs)
2703 Chippawa Road East
Port Colborne, ON
905-687-6108 (Nicole- Registrar)
e: portcolborneart@gmail.com
f @portcolborneartclub
@portcolborneart

Our Annual Art Show and Sale will take place this year on Thursday May 16th, 2019. 12 p.m. - 5 p.m. Tickets \$8/each includes door prize, tea and coffee, sandwiches and desserts. Tickets available at the door and in advance through members.

LOCAL GALLERIES:

ARTS PLACE GALLERY

714 King St.
905 834-9060
artsplacegallery.com
artsplacegallery@gmail.com

Continuing its tradition of presenting the work of local artists and craftspeople. Hosting at least nine exciting new exhibits every year, its pleasant and accessible gallery offers paintings, sculpture, glass, ceramics, jewellery, textiles, wood turning and photography for all budgets. An artist-run co-op, providing exhibition space and support for developing, as well as established artists, and a venue for other community art events. Hours of operation are Thursday - Sunday, noon to 4:30 p.m.

O'S BY THE WATER

1 Clarence St.
905-834-8161 • osbythewater.com

It's a little place where visitors are welcomed as locals, to explore work from all kinds of other little places. Artists, designers and craftspeople have many stories to tell, from the materials in their work to the inspiration behind it. Peggy O'Hara travels with her eyes open for individuals

who have interesting work, and even more interesting stories. Once she finds them, she brings the story back along with the work, and passes it along to you.

WENDY MALOWANY ART STUDIO

31492 Malowany Rd., Wainfleet
289-823-0354
wendy@wendymalowany.com
wendy-malowany.com/events

Come visit a working art studio and gallery, offering fine art for sale, commissions, art workshops, art classes, and Paint Parties. Situated on their 8 acre hobby farm of rescue animals, the animals and local area often become the subject of Wendy's paintings. Wendy has been a professional artist for over 30 years, with a B.F.A. and M.S. in Art Education. We also have many public Paint Parties, Fundraiser Paint Parties, and private Paint Parties scheduled at various venues in the area.

WHISPERING PINES ART STUDIO & GALLERY

5488 Sheraton Rd.
905-894-2217

Offers art and painting lessons in a fun and social environment. Art studio, art lessons for ages 4 to 104; oils, water colour, sketching. The largest art supply store in the area.

COAL HATCH MURALS

downtownportcolborne.com

Local artists in Port Colborne have painted the coal hatches in the downtown area. Coal hatch art helps beautify the downtown for both local resident pedestrians and out-of-town shoppers. It demonstrates pride in our heritage and our community. The coal hatch painting project embodies the true spirit of public art since the colourfully painted coal hatches can be enjoyed by all ages and by all who visit downtown Port Colborne.

THE CANADIAN AUTHORS SERIES

The Canadian Authors Series at Roselawn, is one of the best venues for authors to showcase their work. Our featured guest authors are welcomed by a fun and friendly audience on the last Thursday of the month from September to May (except December and January). Wine tastings precede the readings at seven.

For ticket information, please email canadianauthorsseries@gmail.com or visit TheCanadianAuthorsSeries.ca

PORT COLBORNE OPERATIC SOCIETY

portcolborneoperaticsociety.com

Since 1945, Port Colborne's own operatic society has presented outstanding productions of critically acclaimed Broadway shows. Performances are held at the Lakeshore Catholic High School Auditorium.

SUMMER CONCERTS IN THE PARK

portcolborne.ca

A summer tradition – performances by the Port Colborne Concert Band. Thursday nights on July 4, 11, 18, and 25 under the Direction of Brenda Fairchild–Green. Starts at 7:20 p.m. - 8:30 p.m. (Rain or Shine) at the Mark Fairchild Memorial Bandstand in H.H. Knoll Lakeview Park. Come early and BYOC (Bring Your Own Chair).

PORT COLBORNE PUBLIC LIBRARY

310 King Street (at the corner of King and Elgin, next to the Museum and Archives Building)

A welcoming destination for visitors! Air-conditioned building with free Wi-Fi & computer access. Browse our collection; read newspapers, magazines, e-books or digital magazines in our sunny lounge; enjoy our bright and cheerful children's room; find a bargain in our awesome used book sale; view great exhibits by local artists in the library's Atrium.

Open Monday, Tuesday, and Thursday 10 a.m. - 8 p.m.; Wednesday 10 a.m. - 5 p.m.; Friday and Saturday 9 am to 5 pm • 905-834-6512. Visit online at portcolbornelibrary.org

ENJOY THESE FREE SERVICES FOR VISITORS:

- Computer workstations & laptop
- Internet access & Wi-Fi
- Downloadable magazines, eBooks & audio books — download FREE from the library's website
- Board games, puzzles and other activities
- Electronic databases & reference titles
- Magazines & newspapers
- Exhibiting the works of local artists and artisans
- On-going used book sale

JOIN THE FUN WITH MARCH BREAK AND SUMMER VACATION ACTIVITIES FOR KIDS



The library has a great lineup of activities and events each year including amazing family programming generously sponsored by the Port Colborne Lions Club. Cool down in the summer and sign up for the TD Summer Reading Club and other great programmes! Warm up with an awesome week of activities during March Break!

Documentary Film Programme

The first Wednesday of the month, September to June @ 1:30 p.m.

Tech Help at the Library

Popular topics include email, Facebook, Pinterest, Twitter & downloading eBooks.

Therapy Tails

Mondays, 6:30 p.m. - 7:30 p.m. Drop in and tell a tale to a Therapy Dog in the Children's Room.

Fax, Photocopying, and Print Services Available (colour and b&w), and More!!

Check our website for more programme information at portcolbornelibrary.org
Connect with us on f t @



Stroll, Shop & Relax!



Harmony on West

THERE IS NO SUCH THING AS TOO MUCH SHOPPING! CHECK OUT THE MANY UNIQUE SHOPPING EXPERIENCES THAT PORT COLBORNE HAS TO OFFER.

Shopping in Port Colborne reflects the entrepreneurial spirit of its merchants. There are five distinct shopping areas in Port Colborne – three plazas and two historic commercial districts.

Between these, you will find a selection of antique & collectable stores, galleries, nurseries, gift shops, clothing, and fashion stores, not to mention everyday essentials such as groceries and other convenience products.

DOWNTOWN PORT COLBORNE a food, shopping and event destination on the waterfront! The heart of Port Colborne includes a walkable historic shopping district. Looking for that special something? Take a stroll down Historic West Street and enjoy diverse selection of charming boutiques. More shops and services are within walking distance in the blocks adjacent to Historic West Street. This area also boasts a fine selection of restaurants and pubs serving a variety of foods. The Welland Canal, to the east of the Downtown, reminds shoppers of the importance, past and present,



53 Westside Road, Port Colborne, ON, L3K 5Y7

Sunday: 9am - 9pm
Mon - Fri: 8am - 10pm
Sat: 8am - 10pm

"WHERE HAULERS HAUL"

of the marine industry to Port Colborne, and underscores the nautical theme of many of Downtown's shops and restaurants. Free parking is available along all streets in Downtown. In addition, there are three municipal lots along Catharine Street, including parking in Market Square across from City Hall.

MAIN STREET was once the heart of the old Humberstone Village that merged with Port Colborne in 1952. Along Main Street West you will find fine shops and restaurants housed in preserved, heritage buildings in a quaint village setting. Everything from antiques and gifts to clothing can be found in the shops. Parking is available behind most businesses, and in municipal lots at Main & Mellanby and at King & Main. The Gateway District is also home to Port Colborne's Visitor Information Centre, located in the historic Humberstone Hall at 76 Main Street West.

WEST SIDE PLAZA located at 45 West Side Road, at the intersection of Main Street West, the plaza houses a number of retail options including a supermarket and a pet food store.

PORT COLBORNE MALL features a grocery store, a major hardware and automotive store, and specialty services, all at 287 West Side Road, south of Northland Avenue.

PORTAL VILLAGE PLAZA Located at 482 Steele Street at the intersection of Steele Street and Killaly Street West, includes a number of retail and service companies and caters to visitors as well as residents in nearby developments such as Portal Village.



Hit the Trails



Trail Etiquette

- Obey all trail signs
- Stay on the trail, leave only footprints... and as few of these as possible
- The universal rule of trail courtesy is for all trail users to pass to the left
- Take nothing but photographs
- Carry out everything that you carry in, including wrappers, tissues, soda cans, water bottles, cigarette butts, etc.

Discover the outdoors on Niagara's South Coast by pedal or foot by exploring the numerous cycling and hiking trails.

Port Colborne offers easy access to fantastic paved multi-based trails surrounded by beautiful scenery. Great for walking, cycling, and skating. Two trails that are part of the Greater Niagara Circle Route intersect in Port Colborne. To the west of Port Colborne, in Wainfleet, there is access to a spur of The Great Trail, which is a loose-surface trail ideal for hiking, and trail riding.

The Niagara Cycling Tourism Centre website has information on bike routes & trips, planning your adventure, and resources for cyclists (bike repairs, parking, public washrooms and visitor information).

Connect to the community, visit niagaracyclingtourism.com



More information & detailed cycling maps can be picked up at the Port Colborne Visitor Information Centre at 76 Main Street West • portcolborne.ca/page/cycling

EAST SIDE TRAIL



This section of the Welland Canals Parkway Trail, which is part of a network of trails, is unique in Niagara Region. It accommodates many outdoor enthusiasts on parallel but divided trails, including: equestrians, off-road motorcycles, ATV's and mountain bike. Currently the only part of the East Side Trail which allows motorized machines (bike and ATV) is the Port Colborne section. Vehicles must be green or blue plated and carry liability insurance to legally ride there.

THE FRIENDSHIP TRAIL



This 24-kilometre scenic pathway is paved and safe for cycling and ideal for walking, jogging, and rollerblading. The trail begins at Port Colborne Seaway Park and ends at Historic Fort Erie where it meets up with the Niagara Parks Commission Recreation Trail. All along its length, this trail coincides with The Great Trail.

For more information, maps and routes, visit niagaracyclingtourism.com/bike-routes/greater-niagara-circle-route/friendship-trail/

GORD HARRY

CONSERVATION TRAIL



This section of The Great Trail runs 13 kilometres from the western boundary of Port Colborne, across the south of Wainfleet to Haldimand County, parallel to the Lake Erie shore. This unpaved trail connects several conservation areas in Wainfleet, and is an excellent location for bird watching and spotting wildlife. Ideal for biking and hiking, the Gord Harry Conservation Trail appeals to nature lovers of all ages.

For more information, maps and routes, visit npca.ca/conservation-areas/gord-harry-trail

GREAT LAKES WATERFRONT TRAIL



waterfronttrail.org

This section of the trail extends more than 600 km from the Windsor area in south-western Ontario to Port Colborne and Fort Erie. Here it connects to the Lake Ontario section of the Great

Lakes Waterfront Trail via the Welland Canals Trail and the Niagara River Recreation Trail. This fully marked route with easy to follow signage consists of mainly on-road routes and connects with many area cycling trails including the Greater Niagara Circle Route and The Seaway Trail in the United States.

GREATER NIAGARA CIRCLE ROUTE



The Greater Niagara Circle Route is a paved, multi-use trail that connects Port Colborne, Fort Erie, Niagara Falls, Niagara-on-the-Lake, St. Catharines, Thorold, and Welland in a 140-kilometre circuit. The route consists of several different trails. The Port Colborne section includes the Welland Canals Parkway Trail and the Friendship Trail, both of which meet at Seaway Park. A spur of the trail runs along the Port Promenade, parallel to Historic West Street, and terminates at scenic H.H. Knoll Lakeview Park.

For more information, maps and routes, visit niagaracyclingtourism.com/bike-routes/greater-niagara-circle-route

THE WELLAND CANALS PARKWAY TRAIL



This trail follows the canal along its west bank from St. Catharines through Thorold, Welland, and Port Colborne. In Thorold, the path crosses to the "Thorold Island" created between the old third canal and the current fourth canal. In Welland, it follows the old third canal through the city and is paved on both sides of the canal. The trail zig-zags across the canal in Port Colborne until it meets the Friendship Trail at Seaway Park.

For more information, maps, and routes, visit niagaracyclingtourism.com/bike-routes/greater-niagara-circle-route/welland-canal-recreation-trail/



Hit the **Links**



All located within minutes of downtown, Port Colborne's challenging public and semi-private courses invite golfers to experience lakeside golf in balmy, breezy conditions. Every round played is a great round!

Golfing typically begins early April and continues throughout the fall, often into December.

DAWG'S MINI PUTT

5 Marina Drive, Port Colborne
905-650-1651

Along with Dawg's Fry Truck and Ice Cream Parlour, they have an 18-hole MiniPutt that can accompany any large or small groups and birthday parties while enjoying the great view of Port Colborne Sugarloaf Marina. Discovery Spray Pad across the roadway at H.H. Knoll Lakeview Park. Open 11 a.m. - 10 p.m. daily during regular season.



Port Colborne Country Club

LONG BEACH COUNTRY CLUB

13054 Lakeshore Road, Wainfleet
289-821-6888
longbeachcountryclub.com

This quaint nine-hole golf course is nestled in the heart of Niagara's vacation country. The club features a challenging nine hole 18 tee golf course, a driving range and fully licensed restaurant. The turn of the century clubhouse is tastefully decorated and located across the street from the cooling breezes of magnificent Lake Erie. The atmosphere here is very relaxed and family-oriented and all of our services are open to the public. The club hosts a variety of activities including golf tournaments, birthday parties, biker runs, weddings and music nights. Our 200+ membership group represents a diverse cross section of society from both sides of the border

PORT COLBORNE COUNTRY CLUB

11260 Golf Course Road, Wainfleet
905-835-1311
portcolbornecountryclub.ca

The 18-hole Championship Course is mature and scenic and has a state-of-the-art irrigation system to ensure conditions are always excellent. Our walkable layout with four sets of tee blocks makes the course enjoyable and challenging for golfers of all levels from beginners at the amateur level to professionals. Country Dining-by The Green is open to the public. We invite you to join us.

WHISKY RUN GOLF CLUB

631 Lorraine Road, Port Colborne
905-835-6864 • 877-835-6868
whiskyrun.com

Whisky Run Golf Club is unique among Niagara golf courses, offering three entirely different golf experiences. The woodland, executive length Owl Course; the watery, links style Serpent Course; and the parkland, Fox Course. Each nine-hole course differs not only in appearance but in length and difficulty as well. Designed to challenge yet satisfy golfers of all playing abilities. The courses have a good mix of short but challenging par-3's, par-4's of all shapes and sizes and a par 5's that reward strategy and good shot making, including hole 6 on the Serpent – one of the best par-5's in Niagara. Whisky Run offers Disc Golf! Disc golf is easy to learn, fun to play and one of the most affordable sports in play! "It only takes one great throw to get hooked". Also enjoy our 18 hole layout for 'Foot Golf'. There is friendly staff at Whisky Run and great food at the Bootlegger Bistro, located in their fully licensed clubhouse.



Gone Fishing



Fishing in Port Colborne is an amazing experience, offering year-round, world-class sport fishing. With access to Lake Erie and the Upper Niagara River, Port Colborne offers beautiful scenery and excellent fishing. Well known for its trophy fish: Trout, Walleye and Bass, the Upper Niagara River provides some of the best Bass fishing from June to November.

Lake Erie, the smallest of the Great Lakes in volume, measures 241 miles across and 57 miles from north to south, with a depth of 62 feet. Because it warms rapidly in the spring and summer and freezes frequently in the winter, Lake Erie is an ideal location to catch the Spring and Fall Salmon and Trout Run. Lake Erie is recognized as one of the province's best fishing spots for Perch but anglers have a variety of options, as Walleye, Salmon and Trout are also thriving in Lake Erie.

Port Colborne's waterways are world renowned. Big names like Bob Izumi love to fish these waters, as do tournaments like the Budweiser Can-Am Walleye Challenge, Canal Days Fishing Tournament, Bass Kayaking Tournament and a weekly Walleye League.

SPECIES	JAN	FEB	MAR	APR	MAY	JUN	JUL	AUG	SEP	OCT	NOV	DEC
WALLEYE	•	•	•	•	•	•	•	•	•	•	•	•
LARGEMOUTH BASS						•	•	•	•	•	•	
SMALLMOUTH BASS						•	•	•	•	•	•	
NORTHERN PIKE	•	•	•	•	•	•	•	•	•	•	•	•
MUSKELLUNGE						•	•	•	•	•	•	•
YELLOW PERCH	•	•	•	•	•	•	•	•	•	•	•	•
RAINBOW TROUT	•	•	•	•	•	•	•	•	•	•	•	•
PACIFIC SALMON	•	•	•	•	•	•	•	•	•	•	•	•

ICE FISHING

Despite being so cold outside, some of the greatest fishing in Port Colborne can be had in the winter. From January 1 to March 15, anglers can venture out on the ice (ice conditions permitting) and drop their lines for Yellow Perch, Lake Trout, tasty Whitefish and feisty Northern Pike.

Ice fishing in Gravelly Bay has long been popular, as well. Gravelly Bay is typically frozen for several months every winter.

Lake Erie FISHING FACTS

- Walleye range in size from 16 to 22 inches, with catch rates rivaling any country
- Yellow Perch has been voted as the "tastiest table fish" and the most fun to catch
- Lake Erie's perch range in size from 7 to 12 inches
- Late April, May, June, August and September are the best months to fish for "smallies"
- Smallmouth Bass are also known as "bronzbacks"

WHAT YOU CAN EXPECT TO CATCH IN LAKE ERIE

Lake Erie – cool water species – zone 19

Migratory Species – Rainbow Trout, Brown Trout & Lake Sturgeon

Resident Species – Pan Fish, Yellow Perch, Smallmouth Bass, Largemouth Bass, Channel Catfish, Northern Pike, Walleye, Carp, Muskellunge, Rainbow Trout, Brown Trout and Freshwater Drum.



Sugarloaf Marina



The marina host several events throughout the season including Sugarloaf Walleye Fishing League, Sugarloaf Sailing Club Races, Niagara Boarderpass Wakeboard competitions, comedy night and live music night at the marina.

FOR MORE INFORMATION
CONTACT SUGARLOAF MARINA
 @SugarloafMarina
3 Marina Road • 905-835-6644
portcolborne.ca



@cityofportcolborne
Be Sure to watch
SEASON 3 OF
#DOCKTALK!

Picture perfect best describes Port Colborne's marvelous harbour. For short day visits, Port Colborne has an extra wide, well maintained boat ramp that will accommodate most watercraft. Ample parking for trucks and trailers on-site is also available. Port Colborne's Sugarloaf Marina has over 700 slips and provides all the on-shore amenities to make your visit enjoyable for a day, a week or the entire season.

When you think of summer and you think of warm, clean water, sandy beaches, fair winds and plenty of sunshine, you are thinking about summer at Sugarloaf Marina. Lake Erie is both welcoming and refreshing but it also has its mysteries. For the adventurous type, spend an afternoon scuba diving for sunken treasure; or for those looking for something more relaxing, soak in the sun as you float the day away out on the lake. For those wishing to keep their feet firmly on the ground, take advantage of the giant pavilion available for special events, have a picnic in the park, and watch the kids play in the water at our Discovery Spray Pad, or challenge them to a round of mini-putt. Later, sip a cool drink on the balcony overlooking the harbour at Sugarloaf Marina's restaurant.

Port Colborne Marine

SALES – SERVICE – PARTS

417 KING ST., PORT COLBORNE, ON
905-835-1774

Sales@PortColborneMarine.com
Parts@PortColborneMarine.com



THE H'ART OF KING STREET

Contemporary Fine Arts & Crafts Collective

PAINTINGS • POTTERY
SCULPTURE GLASS
PHOTOGRAPHY • WOOD TURNING
ART CARDS • JEWELLERY

714 KING ST., PORT COLBORNE, ON
905-834-9060
WWW.ARTSPPLACEGALLERY.COM
OPEN 12 PM - 4:30 PM, THURS. - SUN.



Authorized Dealer for Howard Miller and
Bulova Clocks. On site battery replacement.

211 King St. Port Colborne | 289-836-8000
standardtime@cogeco.net
standardtimewatchrepair.com

Marina AMENITIES



- 200 Guest Docks
- 500 Seasonal docks
- 30 & 50 Amp hydro
- Complimentary pump out for seasonal customers
- Gas and diesel available
- Licensed restaurant on-site
- Laundry and shower facilities on-site
- 18 private showers and large, clean washrooms
- Dockside electric BBQs and picnic areas
- Fish cleaning areas
- Gated access to docks & nightly security
- 4 Lane boat launch
- 14 acre park with spray pad & playground
- Mini-golf and ice cream on-site
- Shuttle service available for customers
- Dock attendants available for assistance
- Concierge service available for theatre, dining and car rental reservations
- Leashed pets welcomed
- Welland Canal information and assistance
- Walking distance to shopping
- Wi-Fi Internet service available
- Marine Supply Store on-site
- Giant pavilion available for rent
- Launch and haulout service (35 ton) travel lift
- Seasonal outdoor boat storage
- Mast stepping services
- Home to the Sugarloaf Sailing Club



Fun in the Sun



Nothing can beat a day at the lake! Hot summer days and cool refreshing water make for a day of fun and relaxation on Niagara's South Coast. Come for the sun... stay for the fun! Explore Port Colborne's beaches for a day, a week or all season long.

CENTENNIAL - CEDAR BAY BEACH



2762 Vimy Road

Revamped in 1967 by the former Township of Humberstone's Centennial Project, Centennial Park is a 46-acre park overlooking Centennial-Cedar Bay Beach. It is located on Vimy Road at the southern end of Cedar Bay Road, off Highway #3. Features include 2 outdoor picnic pavilions, washrooms, tennis courts, volleyball courts including beach volleyball, horseshow rings and a sandy beach.



Nickel Beach



Cedar Bay Centennial Beach

NICKEL BEACH



Located on Lake Erie at the southern end of Welland Street at Lake Street, beach goers will enjoy the beauty of Nickel Beach. Aside from being one of the few remaining destinations in Ontario that allows vehicles to park directly on the beach. Nickel Beach offers great trails throughout sand dunes and Carolinian Forest. Public washrooms open during seasonal operational hours listed below. Come out and enjoy some fun in the sun at Nickel Beach!

Nickel Beach is operational year-round for walk-ons. Seasonal vehicle access on beach opens 7 days per week from Victoria Day long weekend (weather permitting) to Labour Day long weekend.

Mondays - Thursdays: 10 a.m. - 6 p.m.

Fridays - Sundays & Holiday Mondays: 9:30 a.m. - 8 p.m.

Open weekends only from Labour Day long weekend to September 29th, 2019, 10 a.m. - 6p.m.

Note: Vehicle access/operations may be closed at any given time based on inclement weather. Note: alcohol and pets are not permitted on the beach.

Daily Pass

Weekdays
(Monday-Friday): \$15
Weekends & Holiday
Mondays: \$20
Walk-ins: Free

Season Pass

Resident \$120
Non-Resident \$150

*Rates & fee subject to changes and modifications.
For more information, call our Visitor's Information Centre at 905-834-5722.

LONG BEACH CONSERVATION AREA

12965 Lakeshore Road, Wainfleet
npca.ca/conservation-areas/long-beach
NPCA: 905-899-3462

Coordinates: Lat: 42.8735° Long: -79.4234°

Spend the whole summer or the weekend at the Long Beach Conservation Area on Lake Erie. Features include a sandy beach and 225 serviced and unserviced campsites. Launch your boat, fish, play bocce ball, horseshoes, baseball, or just enjoy your picnic while the children swim or play on the playground. The abundant beach shoreline is Long Beach's main attraction. The sand and pebble beach is a natural playground for those who swim, sunbathe, boat, sail, fish, sailboard, jet-ski, etc. The list is only limited by the imagination. Visitors can stroll the shoreline or open a lawn chair in the shade to enjoy nature's air-conditioner – the great Lake Erie breeze!

An admission fee is required for entry.



Vale Health & Wellness Centre

550 Elizabeth Street, 905-835-2901 ext. 542



Photo courtesy of Vivid Eye Photography

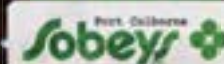
The Vale Health & Wellness Centre is a 140,000 square foot state-of-the-art facility that encourages PORTicipation through sport, recreation, health, wellness, entertainment and commerce and is designated Gold LEED in accessible facility design and function.



Rose City Suites

Remodeled one bedroom suites
Free hot buffet breakfast
Cycle to Port Colborne in just 10km

300 Prince Charles Dr
Welland, ON L3C 7B3
Reservations 1-800-387-8186
www.bestwesternniagara.com



Hours of
operation
8am to 10pm

Open 7 days a
week

Locally
owned and
operated

Phone
905-834-0220



FACILITY AMENITIES INCLUDE:

- 2 NHL sized ice pads; seating capacity in Rink 1 is 1,000 and Rink 2 is 300
- 3 lane indoor running/walking track
- Access to Wi-Fi
- Golden Puck Community Room
- YMCA - double gymnasium, 2 pools; a 6 lane 25 metre competition/lap pool and a leisure/therapeutic pool, a child-minding centre and fitness centre.
- Bocce Club - 6 outdoor accessible bocce courts
- Skate sharpening
- Subway Restaurant
- Nestled within the T.A. Lannan Sports Complex that is home to five soccer fields, three softball diamonds, a playground, outdoor exercise equipment and recreation trails that connect with the Welland Canal Multi-Use Trails.

The City offers numerous pre-registration recreation programs and Pay-As-You-Play activities including skating and pickle ball. The City also accommodates bookings for use of the Community Room along with 17,000 sq. ft. space for trade shows and exhibitions during spring and summer months on arena floor.

For recreation program information or facility reservation, visit the City's website at portcolborne.ca



For more information email
Community & Economic Development:
communityservices@portcolborne.ca
or call 905-835-2900 ext. 542.



Attractions & Activities



Niagara's South Coast is a four-season recreation destination with an extraordinary mix of exciting activities and adventures. From great indoor activities and fitness centres to a range of outdoor recreation opportunities, you'll always find something to do no matter what time of the year.

HORSEPLAY NIAGARA

11061 Ellsworth Road North, Wainfleet
905-834-2380
horseplayniagara.com



Saddle up and explore Port Colborne's natural assets on horseback. Take in the beautiful scenery at a leisurely, relaxed pace, with riding trails covering 300 acres of diverse landscape. Whether you prefer to ride along the shore of Lake Erie or peacefully meander on a trail through quiet fields and woods, Horseplay Niagara, provides a great way to experience the great outdoors.



NEW HUMBERSTONE SPEEDWAY

1716 Hwy. #3 East
905-834-4002
humberstonespeedway.com

New Humberstone Speedway will be celebrating their 60th Anniversary season of racing in 2019. The Speedway brings fun and excitement to Niagara's South Coast with a three-eighths of a mile oval clay track. Racing takes place every Sunday night beginning at 6:30 p.m. with weekly divisions of Mini Stocks, Pro 4 Trucks, Street Stocks, Sportsman and Late Model.

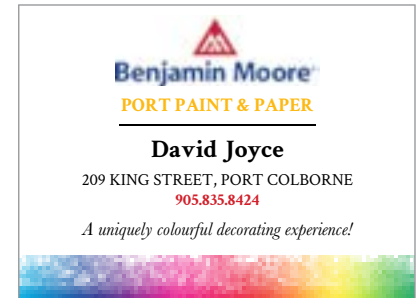
 [@humberstone.speedway](https://www.facebook.com/humberstone.speedway)
 [@NewHumberstone](https://twitter.com/NewHumberstone)

NIAGARA BOARDER PASS

3 Marina Drive
Contact: Chad at 289-687-5177 or
boarderpassniagara@gmail.com

Take part in an exhilarating sport this summer, at the wakeboarding cable park in Port Colborne! Niagara Boarder Pass is located in the heart of Sugarloaf Marina and provides an opportunity for the young and young-at-heart to participate and improve their skills in the sport of wakeboarding behind a state-of-the-art, eco-friendly System 2.0 cable.

Cable parks allow people to wakeboard without a boat, riding behind the system for a set amount of time, hitting features such as floating rails and



jumps or simply just learning how to get up on a wakeboard. You don't have to be a pro to try it! Just come on out.

NIAGARA CENTRAL DOROTHY RUNGELING AIRPORT

435 River Road, Pelham

Welcome to your airport! The Niagara Central Airport, CNQ3, is a municipally owned airport operated by a Commission representing the communities of Pelham, Port Colborne, Wainfleet and Welland. Centrally located in the world renowned Niagara Region, the Niagara Central Airport is poised to grow with a mandate of "service on a higher plane".

Home to Niagara Skydive Centre Inc., 87 Eagle Squadron Air Cadets, COPA Flight 149, and the St. Catharines Flying Club, the airport also serves a multitude of clients requiring inside hangar space, outside tie-downs, and private hangars. 100LL and MOGAS fuel. In 2019, the 43rd Air Race Classic starting in Jackson, Tennessee will end at the Dorothy Rungeling Airport for the first time in Ontario. A full day of public activities is planned on June 22 at the airport from about 9 a.m. to 4 p.m., including a career forum, aviation youth event, Skydive Niagara Demonstrations, a fly market with local vendors, a meet and greet with the racers, and posthumous plaque unveiling in honour of Rungeling.

The St. Catharines Flying Club offers flight training and aircraft rentals to new/current students and pilots. Contact: 905-714-1000 or centralairport.ca.

SHERKSTON FAMILY GO-KARTS

799 Empire Road
905-894-4445
sites.google.com/site/shfagoka

The go-kart track is ¼ of a mile with lots of challenging and hairpin turns, and has been enjoyed by generations of consumers. Providing you and your children a safe and enjoyable experience. The track is inspected every year by Technical Standard and Safety Association (TSSA) and adheres to and follows all of the rules and regulations of TSSA.

SHERKSTON PAINTBALL

490 Sherkston Road
905-894-4133
sherkstontpaintball.com

Niagara's South Coast ultimate paintball experience! Sherkston Paintball is open seasonally from spring to fall. With multiple woods ball fields and speedball fields. Walk-ons & parties/groups are always welcome! Sherkston Paintball is for all skill levels from beginners to experienced players for an adrenaline-fuelled game of strategy, skill and teamwork. Referees are always on the field while you play and making sure that everyone is having a fun, safe and enjoyable time. Other activities offered are Bubble Soccer, Aerial Challenge and Axe Throwing.

SKYDIVE BURNABY

11531 Burnaby Road, Wainfleet
905-899-1528
skydiveburnaby.com

Want to feel the surge of adrenaline, experience new plateaus, and dive into a grand adventure? Niagara's South Coast offers the thrill of a lifetime in the air. Test your courage at Niagara's premier

skydiving facility, Skydive Burnaby. Located minutes outside of Port Colborne, experience the exhilarating views of Niagara's South Coast as you parachute to the ground!

RECREATION

portcolborne.ca/page/online_port

The City of Port Colborne, as well as many community clubs offer a wide variety of recreational activities for all. These range from organized leagues to informal events. If you are staying in Port Colborne for a short period or a long time you are encouraged to take part and enjoy any of the activities listed in the Port Colborne Leisure Guide published semi-annually.



TOURNAMENTS

Port Colborne is home to a number of top notch sports facilities. We would like to invite your group or team to take part in one of our many tournaments.

**Please contact Port Colborne Events and Seasonal Sports Coordinator:
905-835-2900 ext. 535.**



ALGOPORT SKATE & BMX PARK

133 Mellanby Avenue, Lock 8 Park

Located at Lock 8 Park, the Skate & BMX Park's design is marine heritage and replicates a laker passing under a bridge and portrays a compass to navigate youth.

The park features areas for beginner, intermediate and experienced enthusiasts. Cameras are in place and presently recording 24 hours a day, 7 days a week. The park hours of operation are from dawn to dusk.

THE PARK FEATURES:

- 670 square metres of flat concrete pavement;
- 430 square metres of ramped concrete pavement;
- 88 metres of round stainless steel coping;
- 75 metres of square or flush stainless steel coping;
- 16 metres (4 lengths) of grind-able rail and 132 metres of railings;
- 33 square metres spectator zone;
- central fun-box with a curved cut-away;
- 4 ledges;
- a pole jamb;
- 7 riser stair set;
- cantilevered ramp;
- roll-in;
- "lifeboat" jump;
- "compass";
- lily pad;
- concave gap;
- mogul;
- 2 rollers;
- high drop-in ramp;
- 3.3 meter high over vertical quarter pipe ramp;
- 2 textured "gang plank" entry paths.

For more information on the park and the Rules and Regulations please visit portcolborne.ca/page/algoport_skate_bmx_park



Algoport Skate & BMX Park.
Photo courtesy of Thies Bogner.



Play in Our Backyard



H.H. Knoll Lakeview Park. Photo courtesy of Griz Wittlib.

H.H. KNOLL LAKEVIEW PARK

160 Sugarloaf Street

Port Colborne's waterfront park overlooking Sugarloaf Marina and Gravelly Bay. Outdoor picnic pavilions, bandstand, rose garden, children's playground, Discovery Spray Pad, washrooms and parking. Beginning of the Welland Canals Recreational Trail and site of numerous community events including Canada Day Celebration, Canal Days, Thursday night summer concerts and Moonlight Flicks. A seasonal restaurant is located at the park May to November featuring specialties each week. Located near downtown on Sugarloaf Street at Elm Street.

LOCK 8 GATEWAY PARK

133 Mellanby Avenue

Overlooking the Welland Canal and one of the world's longest locks, this beautiful park was established November 5, 1979 to commemorate the visit by then Governor General Ed Schreyer and to mark the 150th anniversary

of the opening of the first Welland Canal. Lock 8 Gateway Park contains an elevated platform for viewing ships in Lock 8, flower gardens, fountains, children's playground, picnic pavilion, and washrooms. Home to the Algoport Skate & BMX Park. Located at Main Street West, Mellanby Avenue and the Welland Canal, between the two jack-knife bridges.

CENTENNIAL PARK

2767 Vimy Road

A quiet, 46-acre park overlooking Cedar Bay. Perfect for the sports enthusiast featuring tennis courts, sandy beach, volleyball courts, playing fields, horse corral, children's playground, picnic pavilion, and washrooms. The Port Colborne Saddle Club presents its events in Centennial Park. Located on Vimy Road at the south end of Cedar Bay Road, off Hwy. 3 on the east side of the canal.

MUD LAKE CONSERVATION AREA

3031 Elm Street

Contact NPCA: 905-788-3135 • npca.ca
Latitude: 42.9295, Longitude: -79.2549

Mud Lake encompasses 160 acres of lakes, streams, wetlands, and woods. This is the perfect spot for bird watching, hiking, cross-country skiing, or viewing rowers from the South Niagara Rowing Club. It covers the flight path of many migratory birds. More than 60 species of birds and waterfowl have been identified at this location. Easy access to Mud Lake is available from the Welland Canals Parkway Trail or by following Elm Street north. Located on Elm Street, north of Invertose Drive.

HUMBERSTONE MARSH CONSERVATION AREA

2025 Neff Road

Contact NPCA: 905-788-3135 • npca.ca
Latitude: 42.9196 Longitude: -79.1426

This 202-acre site surrounds a series of wetlands, making it an ideal destination for bird watching. There are also trails for hiking, and cross-country skiing or snowshoeing in the winter. Located on Neff Road, North of Hwy. 3 East.

MORGAN'S POINT CONSERVATION AREA

11420 Morgan's Point Road, Wainfleet
Contact NPCA: 905-788-3135 • npca.ca
Latitude: 42.8592 Longitude: -79.3455

Located along the Lake Erie shoreline, a sand dune complex and rock shoal outcrop provide natural shore protection for the land, as well as habitat for a wide variety of plants, deer, amphibians, reptiles and birds. Experience the dunes and the majestic 'old growth' Sugar Maple, Black Walnut and Hop Hornbeam trees as you walk the boardwalk and trails. Children's playground on site.

WAINFLEET BOG

20369 Erie Peat Road, Wainfleet

Contact NPCA: 905-788-3135 • npca.ca
Latitude: 42.9097 Longitude: -79.2955

The 1,980 acre Wainfleet Bog is the largest remaining peat bog in Southwestern Ontario. Trails and boardwalks wind you through this wet, wild and wonderful place. You will experience the history of this site, from the peat archives of plant pollen and debris dating back over 5,000 years, to a former peat extraction area and equipment remnants. Bog plants, butterflies, migrating songbirds and animals include the small remnant population of Massasauga Rattlesnakes as well as the rare Spotted Turtle.

WAINFLEET WETLANDS

10600 Quarry Road, Wainfleet

Contact NPCA: 905-788-3135 • npca.ca
Latitude: 42.8809 Longitude: -79.3052

The wetland attracts a large variety of butterflies and over 50 different species of birds including yellow warblers, great blue herons, egrets, gulls, terns, sandpipers and ducks. Abandoned quarries on the site contain an interesting array of coral fossils extending back 380 million years.



Stay Here



Whether you join us for a day, a weekend, or a week, Port Colborne offers a variety of places to rest your head for the evening. Enjoy the convenience of a modern hotel, the charming character of an inn or bed and breakfast, or camp in the rugged outdoors. You will always be able to find the perfect retreat to suit your needs in Port Colborne!

HOTELS AND MOTELS

CAPRI MOTEL

629 Main Street West
905-835-5474
caprimotel.ca

10 units with double beds, cable TV, phone, a/c, fridges and microwaves in all units.

GOOD NIGHT INN

664 Main Street West
905-835-1818
manager@goodnightmotel.com
goodnightmotel.com

23 units with cable TV, kitchenettes, Jacuzzi.

KNIGHT'S INN

10134 Hwy. 3 West
905-835-5202
redlion.com/knights-inn/on/port-colborne/
knights-inn-port-colborne

26 units with cable TV, fridges, outdoor pool; CAA/AAA discount offered.

SEAWAY MOTEL

650 Main Street West
905-834-9854
seawaymotel.com

17 units, cable TV, fridges, BBQ, family suites, smoke free rooms with outdoor pool.

SHERKSTON INN

4771 Hwy. 3, Sherkston
905-894-5454

9 units with satellite TV, fridges and microwaves, queen-sized beds, BBQ and patio, full kitchen access.

WAINFLEET MOTEL

42805 Hwy. 3, Chamber's Corners, Wainfleet
905-899-2792 | 1-866-899-2792
wainmotel.com

18 units with double and single rooms, TV, a/c; four efficiencies, one unit with fireplace and Jacuzzi; outdoor pool; restaurant and grill.

BED & BREAKFASTS

NIAGARA SOUTH COAST GUEST HOUSE AND B&B

10135 Cement Road
905-328-8966
bbcanada.com/14441.html

Pamper yourself with a stay in the stunning 800 sq. ft. open concept loft, newly decorated in a 'coastal cottage glam' style. Located minutes from the shores of Lake Erie. Minutes from conservation land, walking/cycling trails, boating, fishing, golf, skydiving, arts and culture route, and much more!

TALWOOD MANOR B&B

303 Fielden Avenue
905-348-5411
talwoodmanorbb.com

A B&B of Distinction in the heart of Port Colborne sporting four comfortable well-appointed rooms. Rooms contain flat screen HD TV's and A/C's. Gourmet breakfast served daily in the dining room set to impress. Open year round, theatre across the street, walking distance to restaurants/shopping. Free Wifi, secure bicycle storage.

INNS

CANALSIDE RESTAURANT, INN & KITCHEN STORE

232 West Street
905-834-6090
canalside.ca

Spacious self contained suites overlooking the Welland Canal with a full service restaurant on site. Free Wifi, A/C.

CORNERSTONE GUEST SUITES & CAPTAINS QUARTERS

56 West Street
905-835-2555 (Cindi)
cornerstoneguestsuites.ca

Waterfront charm and character on Historic West Street and overlooking the Welland Canal. Biking, sailing or just relaxing and watching the ships go by! Quiet, Pet & Smoke Free Environment.

PILOT LODGING

196 West Street
905-516-5625
pilotlodging.ca

Overlooking the canal, an 800 sq. ft. fully furnished suite. One bedroom plus den with queen size bed, double size sofa bed and a cot. Claw tub with shower, fully equipped kitchen.



La Dolce Vita
Bakery

Anita Armenti-Nadon
Pastry Chef, Owner

Open Tuesday - Friday 8am-6pm
Saturday 8am-5pm
Closed Sundays and Mondays

331 Main St. West, Port Colborne, ON

289-836-9600

LaDolceVitaBakery.PC@gmail.com



REDEFINING GOOD TIMES

*Weekend
Entertainment
& Summer
Volleyball*

905.834.5401

2481 Highway 3, Port Colborne ON (East)
5 mins (East) down Highway 3

KNIGHTS HIDEAWAY

1154 Gorham Rd.
Ridgeway
905-894-1911

Camping
RV Sites
Pool - WiFi
AAA - Good Sam

RV Parts
Store
Free Catalogue



We Cater To You.
Janice Parker

27 Main West
Port Colborne, ON
Open Monday - Sunday
Fully Licensed

289.836.8382

flyingsquirrelbistro.com

CELEBRATING 32 YEARS



DAY PASSES, WEEKLY & MONTHLY
MEMBERSHIPS AVAILABLE

905.834.0550 | GANDMFITNESS.COM

THE BOOTLEGGER BARREL HOUSE

501 Lorraine Road
905-835-6864 or 877-835-6868
lou@whiskyrun.com | whiskyrun.com

This historic farm house has 4 bedrooms and overlooks the 18th green at Whisky Run Golf Club. With a large modern kitchen & dining area, it can accommodate up to 12 people. You can enjoy a BBQ on the private deck, or the Bootlegger Bistro is located in the fully licensed clubhouse across the road.

RESORTS & CAMPGROUNDS

PLEASANT BEACH CAMPGROUND

342 Pleasant Beach Rd.
905-894-4249
pleasantbeachcampground.ca

Deluxe and Rustic Cabin getaways, RV pull-through sites, non-serviced sites and seasonal trailer camping. Five minute walk to the beach, a basketball court and large children's play structure.

SHERKSTON SHORES BEACH RESORT & CAMPGROUND

490 Empire Rd. | 1-877-482-3224
sherston.com

Sherkston Shores Resort is a premier family beach resort located on the beautiful shores of Lake Erie. This 560 acres resort of varied landscapes, topped off with 2 ½ miles of sandy beachfront. With 4 waterslides and splash pad,

GOOD NIGHT INN

- KITCHENETTES
- CABLE & WIFI
- FREE LONG DISTANCE CALLS

664 Main St.
West Port Colborne
905-835-1818
1-833-855-1818

goodnightmotel.com
manager@goodnightmotel.com
manager@goodnightinn.ca

3 pools, 2 hot tub, arcade & 18-hole mini putt, Boston Pizza, weekly fireworks display, and endless entertainment, Sherkston Shores is the Ultimate Vacation Resort... On the Beach! Located at the southern end of Empire Road, off Hwy. 3 East.

BRACEWOOD COTTAGES

12293 Lakeshore Rd., Wainfleet
905-635-2888 | lakeeriecottage rentals.ca
Five fully-contained units available, 2 and 3 bedroom; sand beach; all-inclusive. Please contact your hosts David & Samantha Brace for further information.

LONG BEACH CONSERVATION AREA

12965 Lakeshore Rd., Wainfleet
905-899-3462
npca.ca/conservation-areas/long-beach

225 serviced and unserviced campsites and a beautiful sandy beach, there's plenty of room to stretch out and enjoy summer. Fish, play bocce ball, horseshoes, baseball, or just enjoy your picnic while the children swim or play on the playground.

LONG BEACH RESORT

12265 Lakeshore Rd. RR2, Wainfleet
905-899-3308

32 well equipped rentals on a beautiful sand beach.



Community Calendar



PORT COLBORNE DOWNTOWN CRUISER ASSOCIATION CRUISE NIGHTS THURSDAY NIGHTS IN MAY, JUNE, JULY, AUGUST & SEPTEMBER | 6 P.M.

Clarence Street, Downtown Port Colborne (*between West St. and Catharine St.*)
Contact (or text) 905-933-2055 | pccruisers.com

MAY

May 23 - Racer Night
May 30 - Import Night

JUNE

June 6 - Mopar Night
June 13 - Bike Night
June 20 - Rat Rod Night
June 27 - GM Night

JULY

July 4 - Powerfest
July 11 - Ford Night

July 18 - Truck & Tractor Night
July 25 - Corvette Night

AUGUST

August 1 - Canal Days Kick Off
August 8 - 1950s Night
August 15 - 1960s Night
August 22 - 1970s Night
August 29 - 1980s Night

SEPTEMBER

September 5 - Car & Coffee
September 12 - Awards Night/Grand Finale

APRIL

L.R. WILSON HERITAGE RESEARCH ARCHIVES

Open Monday - Friday, 1 p.m. - 5 p.m.
286 King Street | 905-834-7604
portcolborne.ca/page/museum_archive

MAY

PORT COLBORNE HISTORICAL & MARINE MUSEUM AND HERITAGE VILLAGE OPENS MAY 1

Open Daily from 12 p.m. - 5 p.m. | 280 King Street
905-834-7604 | portcolborne.ca/page/museum

SOLID COMFORT: TALES OF TENNESSEE MAY - DECEMBER

280 King Street | Port Colborne Historical & Marine Museum and Heritage Village
905-834-7604 | portcolborne.ca/page/museum

What does Port Colborne have in common with Tennessee? Visit this new exhibit as the fascinating history of the exclusive "Solid Comfort" summer cottage community is revealed through photographs and artifacts from the museum's collection.

DEADLY DUST - DOMINION: GRAIN ELEVATOR EXPLOSION 1919 MAY - NOVEMBER

280 King Street | Port Colborne Historical & Marine Museum and Heritage Village
905-834-7604 | portcolborne.ca/page/museum

Located at the southern terminus of the Welland Canal, the grain elevator played an important role in the movement of grain through the Great Lakes. This exhibit not only examines this role, but also the tragic fatal explosion that occurred 100 years ago.

TUGGING ALONG: TUGBOATS ON THE WELLAND CANAL | MAY - DECEMBER

280 King Street | Port Colborne Historical & Marine Museum and Heritage Village
905-834-7604 | portcolborne.ca/page/museum

Narrow channels, small canal locks, and lots of ship traffic on the third Welland Canal meant

plenty of business for the tugs and their crews. Peer into the Marine Exhibit Lighthouse to catch a glimpse of this vital part of the canal scene.

THE ANNUAL LIONS CLUB WALK FOR DOG GUIDES | MAY 19

10 a.m. registration | 11 a.m. walk | 905-835-2083

Lions Community Centre, 49 Chippawa Road with a BBQ to follow. Pledge sheets can be found at various businesses, veterinary clinics and pet stores around town.

COMMUNITY SAFETY DAY | MAY 25

11 a.m. - 2 p.m.
3 Killaly Street West | Port Colborne Fire Hall
905-834-4512

The Port Colborne Fire & Emergency Services presents the 25th Annual Community Safety Awareness Day. This is a FREE event with plenty of activities, including bike rodeo, interactive fire displays, exhibits & demonstrations, and complimentary hotdogs and refreshments.

35TH ANNUAL ARABELLA'S PIE SOCIAL AND HISTORY FAIR | MAY 26

12 p.m. - 4 p.m.

Get your pie on! Come one, come all to Arabella's Pie Social and History Fair. Enjoy a slice of homemade pie with hot or cold beverage at Arabella's Tea Room. After you sample pie, discover traditional skills at the Niagara Antique Power demonstration and the museum's Blacksmith Shop. Spinning and tatting demonstrations will also be featured in front of the Log House. Experience printing a card on the heritage press, trying on traditional costumes and, playing a game of croquet. Visit with historical interpreters from Old Fort Erie. Perennial plants for sale by the pavilion that are looking for a new home in your garden; Then discover the gems that can be found at the Towpath Treasures Flea Market.

JUNE

ARABELLA'S TEA ROOM | JUNE - SEPTEMBER

Daily 2 p.m. - 4 p.m. | 280 King Street
Port Colborne Historical & Marine Museum
and Heritage Village 905-834-7604
portcolborne.ca/page/museum

ARABELLA'S TEA FOR TWO WEEK | JUNE 2 - 8

Two for the price of one, 2 p.m. - 4 p.m.
280 King Street | Port Colborne Historical &
Marine Museum and Heritage Village
905-834-7604 | portcolborne.ca/page/museum

GUIDED TOURS OF MUSEUM HERITAGE VILLAGE AND "TALES OF TENNESSEE"

JUNE 3, 10, 17 & 24

280 King Street | Port Colborne Historical &
Marine Museum and Heritage Village
905-834-7604 | portcolborne.ca/page/museum

SEXY LAUNDRY | JUNE 12 - 23

Showboat Festival Theatre
Theatre Box Office: 905-834-0833
showboattheatre.ca

Comedy by Michele Riml
Directed by Derek Ritschel

KIDS FISHING DERBY | JUNE 16

905-835-2261 | pcdcc.com

H.H. Knoll Lakeview Park, Port Colborne. Free
registration starts at 8 a.m., fishing until 10:30
a.m., followed by awards & free lunch for kids. For
kids aged 13 and under. Fishing is from shore and
all fish are to be released. Free worms provided.
Lots of great prizes, including the Barry Carr
Memorial Trophy. Requirements: Bring your own
bucket. For more information call Kathy McQuire

NICKEL BEACH BONFIRE EVENT | JUNE 21

8:30 p.m. - 10:30 p.m.

A free, family-friendly evening that includes a
community bonfire on the beach, marshmallow
roast (and s'more making), and live acoustic music.

BUDWEISER CANAM WALLEYE SHOOTOUT JUNE 21 - 22

Big Fish Friday, tournament Saturday, inclement
weather date Sunday. For more information, call
Erie Tracker, 905-834-9218.

ART CRAWL PORT COLBORNE | JUNE 22

11 a.m. - 11 p.m.
facebook.com/ArtCrawlPortColborne/

Our vibrant art scene shines in downtown
Port Colborne. Artists of many genres from
across Niagara partner with downtown
businesses in stores, on sidewalks, and on
the street. Experience art, live music, artful
activities, and surprise performances.

LAKE ERIE INTERCLUB CRUISE ARRIVES AT SUGARLOAF MARINA | JUNE 25

erieinterclub.com

The Lake Erie Interclub Cruise is a well-known
event, raced by boats from the United States and
Canada. The series provides five days of fun and
exciting sailboat racing, as the yachts race from
port-to-port. In addition, the regatta provides
ample time to experience the hospitality of the
participating clubs, as well as to discover the
wonders of each port.

ONTARIO FAMILY FISHING WEEK JUNE 29 - JULY 7

ontariofamilyfishing.com

Ontario Family Fishing Events is a province-
wide opportunity for Canadian residents to fish
Ontario waters without the otherwise mandatory
fishing version outdoors card. This is a great time
to introduce friends and family to fishing.

BOATERS BEACH PARTY @ NICKEL BEACH JUNE 30

Boaters are encouraged to head to Nickel Beach,
anchor their boats and enjoy the beach for a day.
For more information, call Sugarloaf Marina at
905-835-6644.

NIAGARA ANTIQUE POWER ASSOCIATION

JUNE 29 - JULY 1 | 8 a.m. - 5 p.m.

905-835-8902 | niagaraantiquepower.org

47th Annual Heritage Display at Learn Heritage
Farm, 1957 Wilhelm Road, off of Hwy # 3
Sherkston. This year's show feature will be
Cockshutt and Oliver. Entertainment, A Kiddy
Korner with Games and Fun, Horse Pulls and
Garden Tractor Pulls on Saturday and Sunday.
Many displays on the grounds, Church service
on Sunday at 9 a.m., Arts and Crafts & Trading
Post Flea Market and Souvenir Shop. Excellent
Food Vendors and Ice Cream and Bake Shop.
Something for everyone.

JULY

CANADA DAY

OPTIMIST DAY IN THE PARK | JULY 1

10 a.m. - 9 p.m. | portcolborne.ca/page/canada_day

Come join us at H.H. Knoll Lakeview Park for
lots of family fun on Canada Day, starting at
10 a.m. There is an assortment of vendors,
games, animals, and live entertainment. At
1 p.m., gather around the bandshell for the
opening ceremonies followed by some great
entertainment for the rest of the afternoon.
Fireworks are planned for over the canal skies
beginning at dusk on West Street.

GUIDED TOURS OF MUSEUM HERITAGE VILLAGE AND "TALES OF TENNESSEE"

JULY 1, 8, 15, 22 & 29

280 King Street | Port Colborne Historical &
Marine Museum and Heritage Village
905-834-7604 | portcolborne.ca/page/museum

MOONLIGHT FLICKS IN THE PARK

JULY 3, 10, 17 & 24

Enjoy movies at H.H. Knoll Lakeview Park on
Wednesday evenings at dusk. Bring your own
chairs and blankets. The date for the Grand
Finale to be confirmed.

EARLY AUGUST | JULY 3 - 14

Showboat Festival Theatre
Theatre Box Office 905-834-0833
showboattheatre.ca

Comedy by Kate Lynch
Directed by Mairi Babb

PORT COLBORNE CONCERT BAND July 4, 11, 18 & 25

A summer tradition, performances by the Port
Colborne Concert Band under the direction
of Brenda Fairchild-Green at 7:20 p.m. (rain or
shine) at the Mark Fairchild Memorial Bandstand
in H.H. Knoll Lakeview Park. Come early
and BYOC (Bring your own chair). Donations
accepted.

PORT COLBORNE LIONS

ANNUAL CHARITY CARNIVAL | JULY 4 - 7

Lions' Field, Killaly Street West and Elm Street
905-835-2083

Great fun for the whole family. The Carnival
offers rides, games, nightly bingo, draws and
raffles. Great food including beef on a bun,
Fish fry Friday, hamburgers, sausage, waffles
and donuts. Look for special ride bracelets in
community businesses. All carnival proceeds
are used to support youth sport activities,
community projects and charitable donations.

WEST STREET WALKING TOURS JULY 5, 12, 19 & 26

For more information call Archives at the
Port Colborne Historical & Marine Museum.
905-834-7604 or follow us on Facebook.

HURRY HARD | JULY 24 - AUGUST 4

Showboat Festival Theatre
Theatre Box Office: 905-834-0833
showboattheatre.ca

World Premiere Comedy by Kristen Da Silva
Directed by Sarah Phillips

NICKEL BEACH BONFIRE EVENT | JULY 26

8:30 p.m. - 10:30 p.m.

A free, family-friendly evening that includes a community bonfire on the beach, marshmallow roast (and s'more making), and live acoustic music.

AUGUST

HUMBERSTONE VILLAGE WALKING TOURS

AUGUST 2, 9, 16, 23, 30

For more information call the Archives at the Port Colborne Historical & Marine Museum 905-834-7604, or follow us on Facebook.

LIGHTHOUSE TOURS | August 2 - 5

Participants will enjoy a guided tour and boat ride to the main lighthouse and outer range light (as permitted) near the entrance of the Welland Canal. Tour donation required of \$15 per adult & \$5 per child (ages 6-18). Children under 5 are free. Lighthouse Passports also available during Canal Days weekend for \$10. Sign up for tours at the Sugarloaf Marina Pavilion - 3 Marina Rd., Port Colborne, ON, 905-835-6644. For more information call 905-835-8051.

5TH ANNUAL SAWHORSE RACE | August 3

Hosted by the Main Street BIA at Lock 8 Park and starting at 11 a.m. Teams compete riding handmade sawhorses, whose only means of power are the people pushing them. A spectacle to behold and a not-to-be missed event that is loads of fun for the whole family. For more information, please call 289-936-799.

LAST CALL FOR ANNUAL CAR RAFFLE | August 5

Final day for the Lions annual car raffle to be drawn at 3 p.m. at H.H. Knoll Lakeview Park during Canal Days. This year will see a 2019 4x4 Jeep Compass raffled off. Get your tickets early as there are numerous cash draws during the carnival, at Canal Days, see any PC Lions member.

GUIDED TOURS OF MUSEUM HERITAGE VILLAGE AND "TALES OF TENNESSEE"

AUGUST 5, 12, 19 & 26

280 King Street | Port Colborne Historical & Marine Museum and Heritage Village
905-834-7604 | portcolborne.ca/page.museum

JOE CRAWFORD SUMMER CONCERTS IN THE PARK | AUGUST 6, 13, 20 & 27

Join Joe Crawford every Tuesday in August at 7 p.m. for music in King George Park. Bring a lawn chair & non-perishable food items that will be collected for Port Colborne St. Vincent De Paul Society Food Bank and funds collected for local charities throughout P.C. Knights of Columbus. Weather permitting. For more information, call 289-241-2128 or visitjoecrawfordlive.com.

SOUTH NIAGARA ARTIST SUMMER STUDIO TOUR | AUGUST 10 - 11

Take part in this free, self-directed, artistic adventure travelling throughout Wainfleet, Port Colborne to Ridgeway/Crystal Beach. Visit the artists at their studios along this scenic route. 10 a.m. - 5 p.m. For more information, visit southniagaraartists.ca.

PRAIRIE NURSE | AUGUST 14 - 25

Showboat Festival Theatre
Theatre Box Office: 905-834-0833
showboattheatre.ca

Comedy by Marie Beath Badian
Directed by Audrey Dwyer

SUNRYPE TRI KIDS TRIATHLON SERIES AUGUST 18

The SunRype Tri Kids Triathlon Series offers safe, non-competitive, confidence-building races for children and youth ages 3 to 15. TRI KiDS events combine three sports kids love: swimming, biking, and running. Returning to the Vale Health & Wellness Centre (550 Elizabeth Street) this August! For more information, or to register, visit trikids.ca.

HOOFSTOCK | AUGUST 24

HoofStock is an event that will raise money for Grey's Haven Farm Sanctuary and showcase the City of Port Colborne and the talented artists/artisans and businesses we have. The event will feature artisan & food vendors, local entertainment, artists, and family fun at H.H. Knoll Lakeview Park from 1 p.m. - 11 p.m. Contact sweetsunshinereads@outlook.com.



Photo courtesy of Jon Nicholls Photography / Shutterstock.com

41ST ANNUAL CANAL DAYS MARINE HERITAGE FESTIVAL | August 2 - 5

This year's 41st Annual Canal Days Marine Heritage Festival offers activities and attractions to enliven the senses. Vessels gather in Port Colborne each Civic holiday weekend, for a four-day celebration of history and heritage. Explore the decks of the ships or feel the spray as you cruise Lake Erie on the Empire Sandy. Nestled at the junction of the Welland Canal and the Lake Erie north shore, Port Colborne is a working marine community, with rich nautical history and welcoming hospitality. At the height of summer, the entire City takes time to celebrate the reasons why our picturesque City has grown and prospered.

Canal Days encompasses the entire community, with activities at a dozen different venues: The Marina is host to the Lighthouse Tours and H.H. Knoll Lakeview Park is host to the Canal Days Concert Series and the new addition of a fishing derby. The Seaway Park children's area has inflatables, kid's activities, and you can ride a train across bridge 21. At the Port Colborne Historical & Marine Museum, the history of the Welland Canal is on display and heritage artisans can be seen working their trades. Festival guests can ride the free Canal Days shuttle to the Vale Health & Wellness Centre for an indoor craft show, or the Garden Swing Jazz event at the Roselawn Centre. Festival food and shopping kiosks fill downtown, Canal Days Concert Series features top-notch entertainment, and there is a classic Car Show and Kite Show. An ever-changing roster of activities has repeatedly redefined Canal Days, and as the festival is in its fifth decade, that growth will continue as the festival sails forward. A source of great community pride, Canal Days is Port Colborne's signature event. The countless local volunteers who work tirelessly over four days make this event Niagara's premier summer festival.

t: 905-835-2900 ext. 566

e: eventservices@portcolborne.ca

1-888-PORT-FUN | canaldays.ca



SUGARLOAF MARINA'S LABOUR DAY WEEKEND EVENT | [August 31](#)

Entertainment and food to be announced later. For more information, call Sugarloaf Marina 905-835-6644.

MARSHVILLE HERITAGE FESTIVAL [August 31 - September 2](#)

Marshville Heritage Village, Wainfleet
10 a.m. - 5 p.m.

Juried Arts & Crafts Show featuring artisans on the grounds of a re-created 19th century rural village. Marshville features costumed demonstrations of 19th century chores, food vendors, live entertainment, covered wagon rides, antique autos, vintage motorcycles, farm equipment, Nineteenth century craftsmen and Ontario's only original steam sawmill, all add to this unique festival. There will be a free concert in the Park on Sunday September 2 at 6:30 p.m. On each of the three days, once again families will enjoy Craig the Comic Juggler. For more information, contact the Marshville Heritage Society: 905-899-9995 or [marshvilleheritagefestival.ca](#)

SEPTEMBER

LUNENBURG | [September 11 - 22](#)

Showboat Festival Theatre
Theatre Box Office: 905-834-0833
[showboattheatre.ca](#)

Comedy by Norm Foster
Directed by Derek Ritschel

SUGARLOAF MARINA'S YEAR END PARTY [September 14](#)

Entertainment by Practically Hip (Tragically Hip cover band). This is a ticket event and tickets will be available at Sugarloaf Marina and Don Cherry's Sports Grill. For more information, call Sugarloaf Marina 905-635-6644.

TERRY FOX RUN | [September 15](#)

This year will mark the 39th annual Terry Fox Run in Port Colborne. The head shave will take place at 12:30 p.m. in the H.H. Knoll Lakeview Park Bandshell and the run will commence at 1 pm. For more information, contact Nancy Salvage at [nancy.salvage@sympatico.ca](#).

WAINFLEET FALL FAIR | [September 19 - 21](#)

Fairgrounds, Wainfleet

The fair offers an entire weekend of celebrations for all ages, capturing the essence of the rural community of Wainfleet. Come see a cattle show, horse pull, pet show, pumpkin carving contest, corn eating contest, baby show, Wainfleet Idol, Iron Farmer Contest, Rock Climbing Wall and inflatables as well as prices for everything from squash to knitting. The fairgrounds are located in Wainfleet Village. For more information, contact the Wainfleet Agricultural Society: [wainfleet.fair@gmail.com](#)

NICKEL BEACH BONFIRE EVENT | [September 20](#)

8:30 p.m. - 10:30 p.m.

A free, family-friendly evening that includes a community bonfire on the beach, marshmallow roast (and s'more making), and live acoustic music.

HARVESTFEST | [September 28](#)

Come to downtown Port Colborne for GREAT family fun. With over 20 vendors that include everything from crafts, community groups, and food. King George Park features activities for kids including face painting, crafts, and bouncy castle, free photo booth, classic cars, and music. Also, the very popular wagon ride is back! For more information visit [exploreportcolborne.ca](#).

OCTOBER

SOUTH NIAGARA ARTIST FALL STUDIO TOUR [October 5 - 6](#) | 10 a.m. - 5 p.m.

Take part in this free, self-directed, artistic adventure travelling throughout Wainfleet, Port Colborne to Ridgeway/Crystal Beach. Visit the artists at their studios along this scenic route. For more information, visit [southniagaraartists.ca](#).

FIRE PREVENTION WEEK CELEBRATION

[October 5](#) | 11 a.m. - 2 p.m.

Port Colborne Fire Hall
3 Killaly Street West | 905-834-4512

FIRE PREVENTION WEEK | [October 6 - 12](#)

Port Colborne Fire Hall
3 Killaly Street West | 905-834-4512

NOVEMBER

BLACK & WHITE CHRISTMAS [November - December](#)

280 King Street | Port Colborne Historical & Marine Museum and Heritage Village
905-834-7604 | [portcolborne.ca/page.museum](#)

Breaking from the traditional colours of the holidays, this exhibit showcases black & white artifacts from the museum's collection. This chic, unique, elegant, and versatile Christmas display is all about style.

THE ANNUAL PORT COLBORNE LIONS CLUB FOOD DRIVE | [November 2](#)

905-834-6863
Look for details how and when you can help.

DOWNTOWN BIA CHRISTMAS OPEN HOUSE [November 16 - 17](#)

[exploreportcolborne.ca](#)
Come shop in Downtown Port Colborne.

MARSHVILLE'S CHRISTMAS IN THE VILLAGE [November 24](#) | 1 p.m. - 4 p.m.

Village of Wainfleet, Hwy # 3 West
905-899-9995 | [marshvilleheritagefestival.com](#)
No charge but a food donation for Port Cares will be welcomed.

FA LA LA LADIES NIGHT | [November 28](#)

[exploreportcolborne.ca](#)
Grab your bestie and shop our annual ladies night with participating merchants. Why? Free Stuff! Gift Purchases, treats, and sips and plenty of holiday cheer.

DECEMBER

43RD ANNUAL GRAND OLD CHRISTMAS FESTIVAL | [December 1](#) | 12 p.m. - 4 p.m.

A Little Something for Everyone! Step back in time and enjoy holidays of old at the Port Colborne Historical & Marine Museum. Rediscover the spirit of the season as you indulge in traditional Christmas pudding and caramel sauce at Arabella's Edwardian Tea Room. Enjoy a horse-drawn carriage ride, try your hand at making and decorating your own wreath, dipping candles or making an ornament. Visit the Blacksmith Shop, stop by the Schoolhouse, where you can have your photo taken with Jolly Old Saint Nick himself and shop at the museum's gift shop and at the craft sale in the L.R. Wilson Heritage Archives. Carolers are singing, chestnuts are roasting, and the village is bedecked in greenery and bows. This enchanting festival set in our picturesque heritage village has lots of family-friendly activities in a joyous holiday atmosphere.

TUGBOAT SANTA | [December 7](#)

[exploreportcolborne.ca](#)

Santa Claus arrives in downtown Port Colborne on a tugboat! A Port Colborne Original! 1 p.m. - 3 p.m. (pending ship traffic) the only place in Niagara where Santa makes a special appearance by sailing in on the deck of J.W. Cooper Tugboat. Children of all ages line the wall of the Canal along West Street to cheer on the arrival of the jolly old elf.

SANTA CLAUS PARADE | [December 7](#) | 6 p.m.

905-825-2900 ext. 566 | [portcolborne.ca](#)

Port Colborne's Santa Claus Parade marks the beginning of the holiday season and is an opportunity for families to watch Old Saint Nicholas rolling into Port Colborne in time for the holidays. Hundreds of people line the parade route at night to watch the seemingly endless number of colourful floats lit up with Christmas lights.

NEW YEAR'S EVE FAMILY CELEBRATION

December 31 | 2 p.m. - 6 p.m.

905-835-2900 ext. 566 | portcolborne.ca

Enjoy the final countdown to New Year's. Bring the family to the Vale Health & Wellness Centre and enjoy skating, gym activities, kite making, cookie decorating, mad science, face painting, fireworks and more.

2020

SPORTSFEST | February

905-835-2900 ext. 566 | portcolborne.ca

SportsFest is an annual mid-winter celebration that provides activities for all ages. It is a city-wide, family friendly community event, attracting participants from across Niagara. The Mayor's Cup Invitational Hockey Tournament, indoor volleyball tournament, snow golf, sno-pitch, family skating, swimming, cook-offs, and trivia are just some of the events offered to the public.

EASTER EGGSTRAVAGANZA | April 11

905-835-2900 ext. 566 | portcolborne.ca

The Easter Bunny will be returning to the Vale Health & Wellness Centre! Join us for an Easter Egg Hunt (donations accepted at registration), Easter crafts, Easter skate, Easter Swim and an Easter show. Brought to you by the City of Port Colborne.

NIAGARA CRAFTERS

*Unique Gifts, Home Décor,
and more, by Local Artisans*

Mon - Sat 10am to 4pm

149 Clarence St, Port Colborne
ON | 289-501-0776



*For over 75 years The Belmont
has proudly been Port Colborne's
favourite gathering place. Today the
tradition remains and The Belmont
continues to foster many found
memories and lasting friendships.*

There's no place like The Belmont

175 King Street
Port Colborne, ON L3K 4G5
thebelmontportcolborne.com
905.834.4273 | 289.836.9777




KIN

289.214.2929
NiagaraSoldbyKate.com
NiagaraSoldbyKate@gmail.com

NIAGARA SOLD BY KATE...GUIDING YOU HOME

May We Suggest

ARTS AND ENTERTAINMENT

SHAW FESTIVAL THEATRE

shawfest.com | 1-800-511-SHAW

FORT ERIE RACE TRACK

forterieracing.com

FALLSVIEW CASINO

fallsviuecasinoresort.com | 1-888-FALLSVU

CASINO NIAGARA

casinoniagara.com | 1-888-325-5788

FAMILY FUN

WELLAND CANALS CENTRE AT LOCK 3

tourismstcatharines.ca | 1-800-305-5134

SAFARI NIAGARA

safarieniagara.com | 1-866-367-9669

FALLSVIEW INDOOR WATER PARK

Toll Free: 1-888-234-8408

HISTORY AND CULTURE

MUSEUMS OF NIAGARA

tourismniagara.com

RECREATION

NIAGARA CYCLING

niagaracyclingtourism.ca

GOLF NIAGARA

niagaragolftrail.com | 1-866-PLAY-NGT

WELLAND RECREATIONAL CANAL

wellandrecreationalwaterway.ca

SHOPPING

THE PEN CENTRE, ST. CATHARINES

thepencentre.com | 1-800-582-8202

OUTLET COLLECTION AT NIAGARA

outletcollectionatniagara.com | 905-687 6777

SEAWAY MALL

seawaymall.com | 905-735-0694

DOWNTOWNS OF NIAGARA

DOWNTOWN ST CATHARINES

mydowntown.ca

DOWNTOWN WELLAND

downtownwelland.ca

DOWNTOWN NIAGARA FALLS

niagarafallsdowntown.com

DOWNTOWN THOROLD

thoroldbia.com

RIDGEWAY VILLAGE

ridgewayont.ca

DOWNTOWN BEAMSVILLE

beamsvillebia.com

DOWNTOWN GRIMSBY

friendlybynature.com

OTHER DAY TRIP IDEAS

tourismniagara.com | visitniagara.com





PORT COLBORNE

UNCHARTED. UNEXPECTED.

1.888.PORT.FUN • portcolborne.ca

Port Colborne Visitor Information Centre Humberstone Hall,
76 Main Street West, Port Colborne, ON L3K 3V2 | 905.834.5722