

PUBLIC INFORMATION CENTRE (PIC)



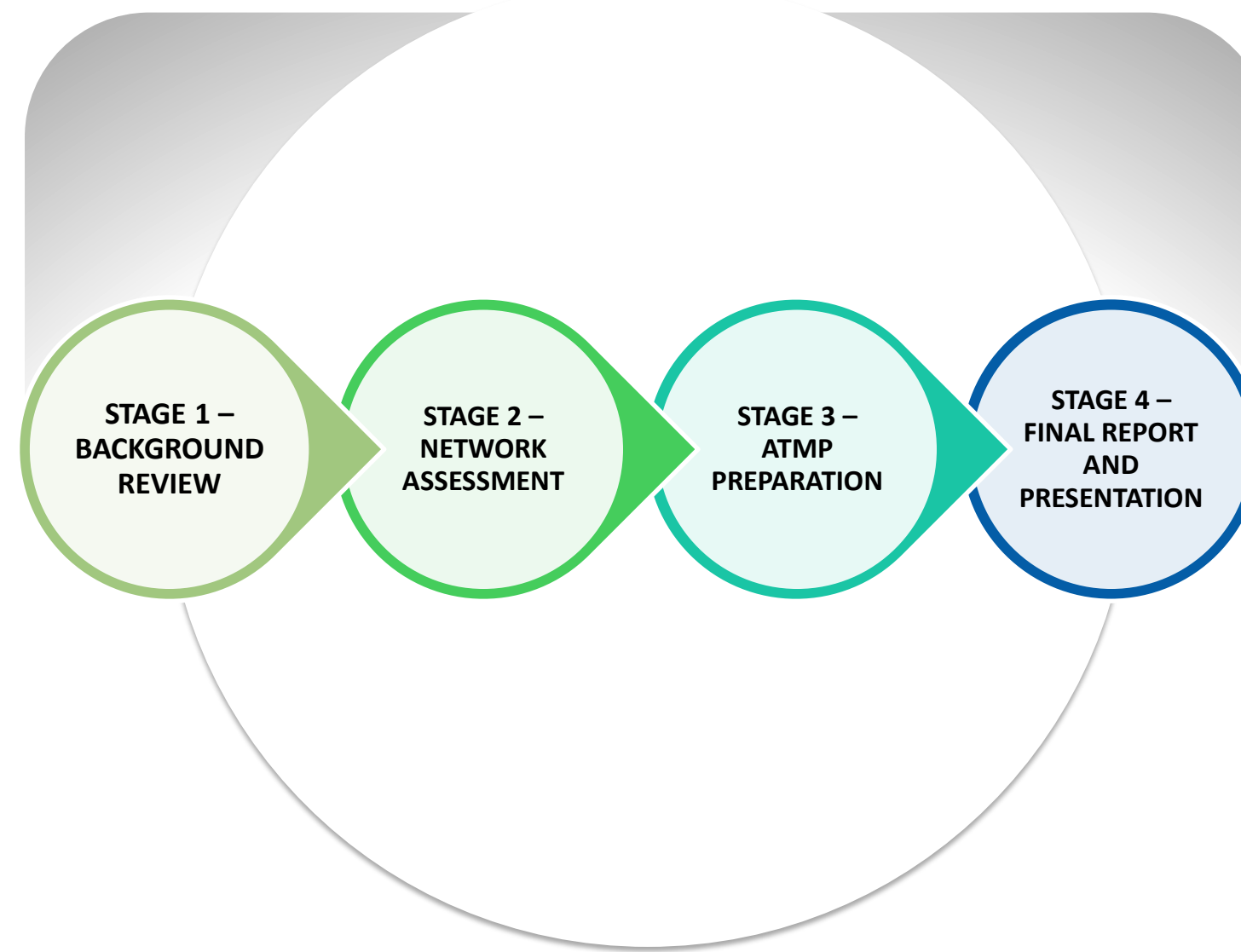
The City of Port Colborne Active Transportation Master Plan

August 17, 2023

PURPOSE OF THIS PIC



**Present the Study Area,
Purpose and Objectives**



Outline the ATMP Process



**Review Existing Active
Transportation Network**



**Identify Resident Priorities in
Relation to Active
Transportation Facilities**

Seek public input / comments & provide opportunities for public to ask questions

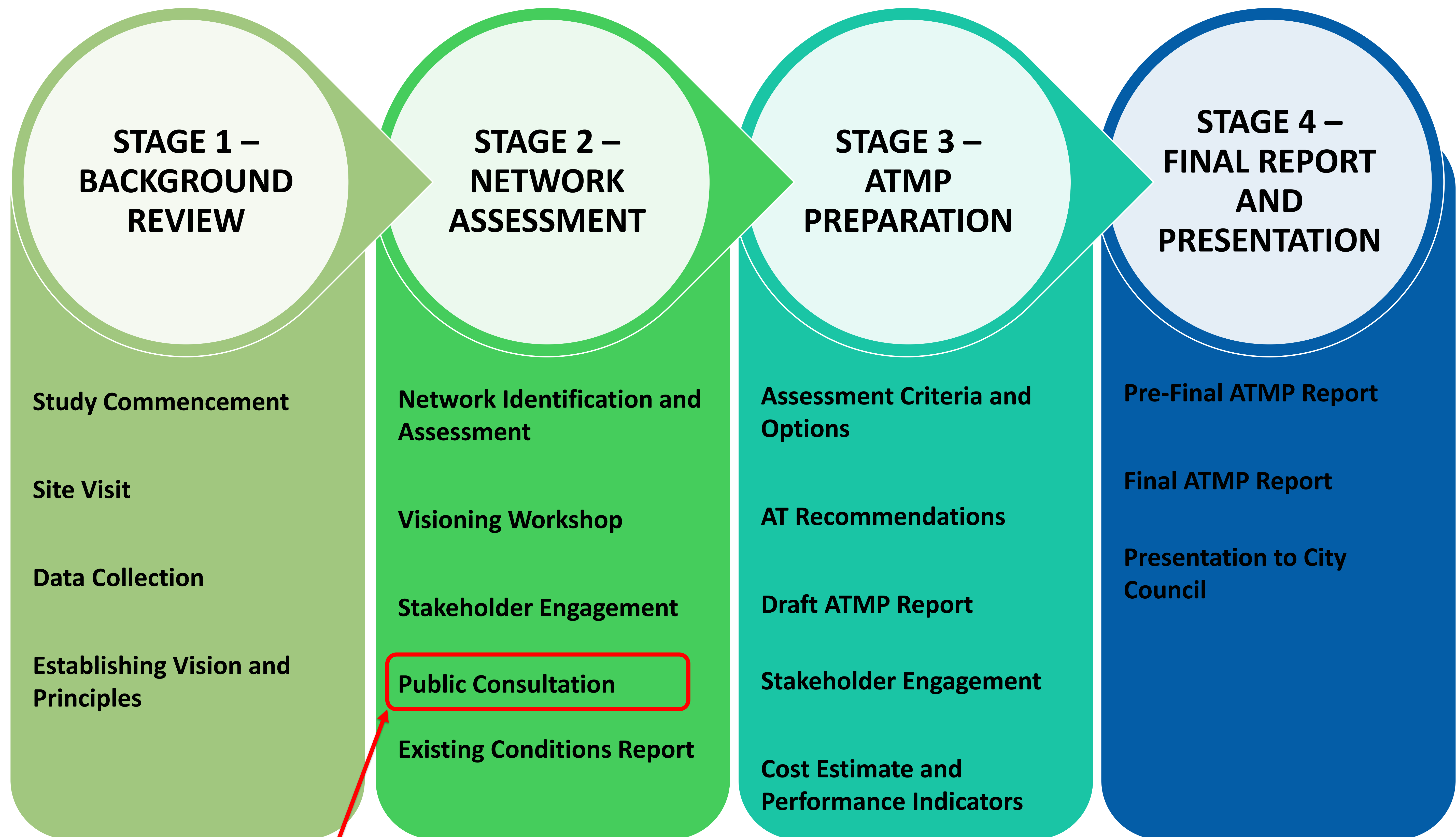
Study Objective:

- To develop a centralized document for everything related to active transportation for the City of Port Colborne.
- Identify, evaluate, and select active transportation (AT) facility improvements.

More details about the project are available on the project website:

<https://www.portcolborne.ca/en/news/active-transportation-master-plan.aspx>

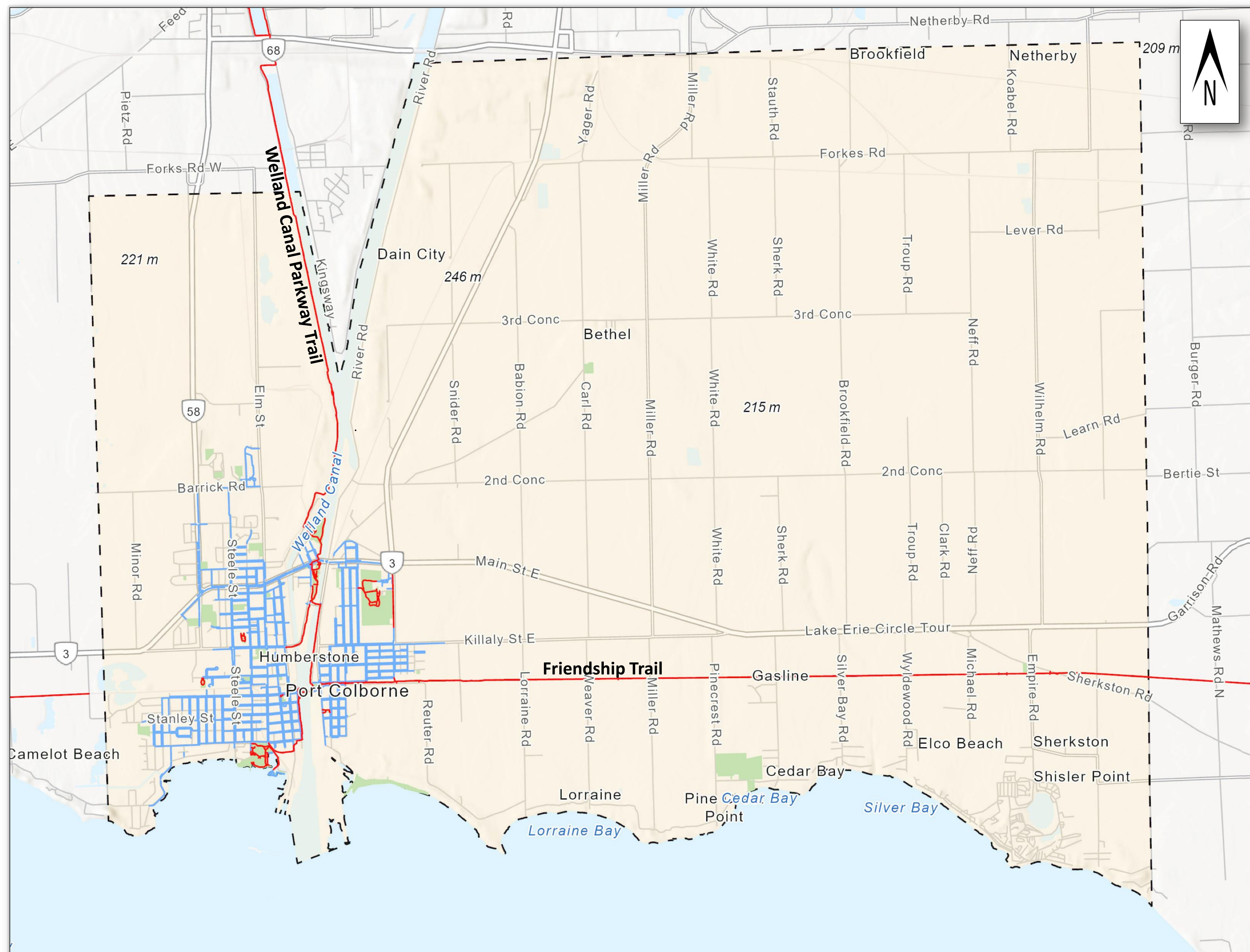
ACTIVE TRANSPORTATION MASTER PLAN PROCESS



WE ARE HERE

PROJECT OVERVIEW

STUDY AREA & BACKGROUND

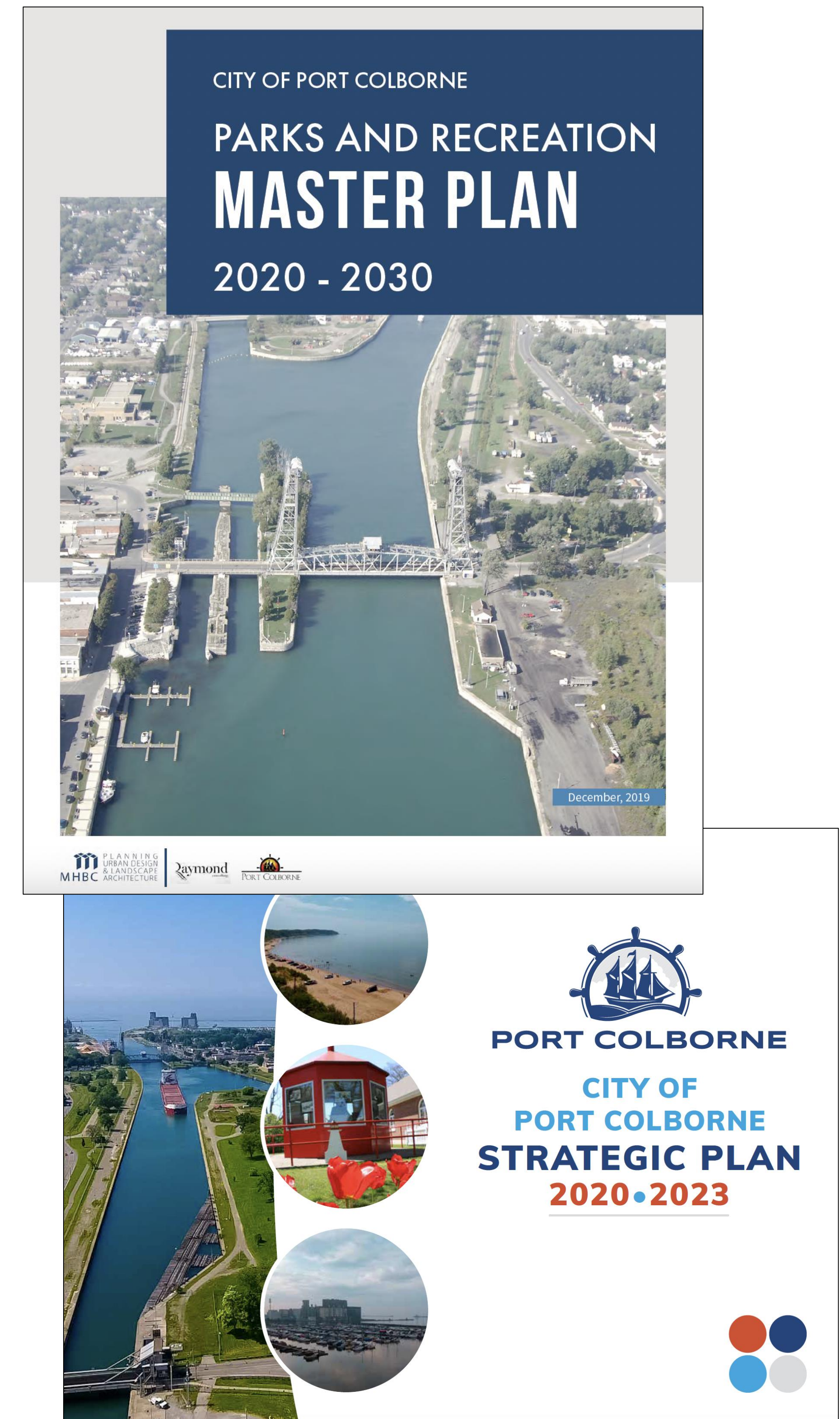
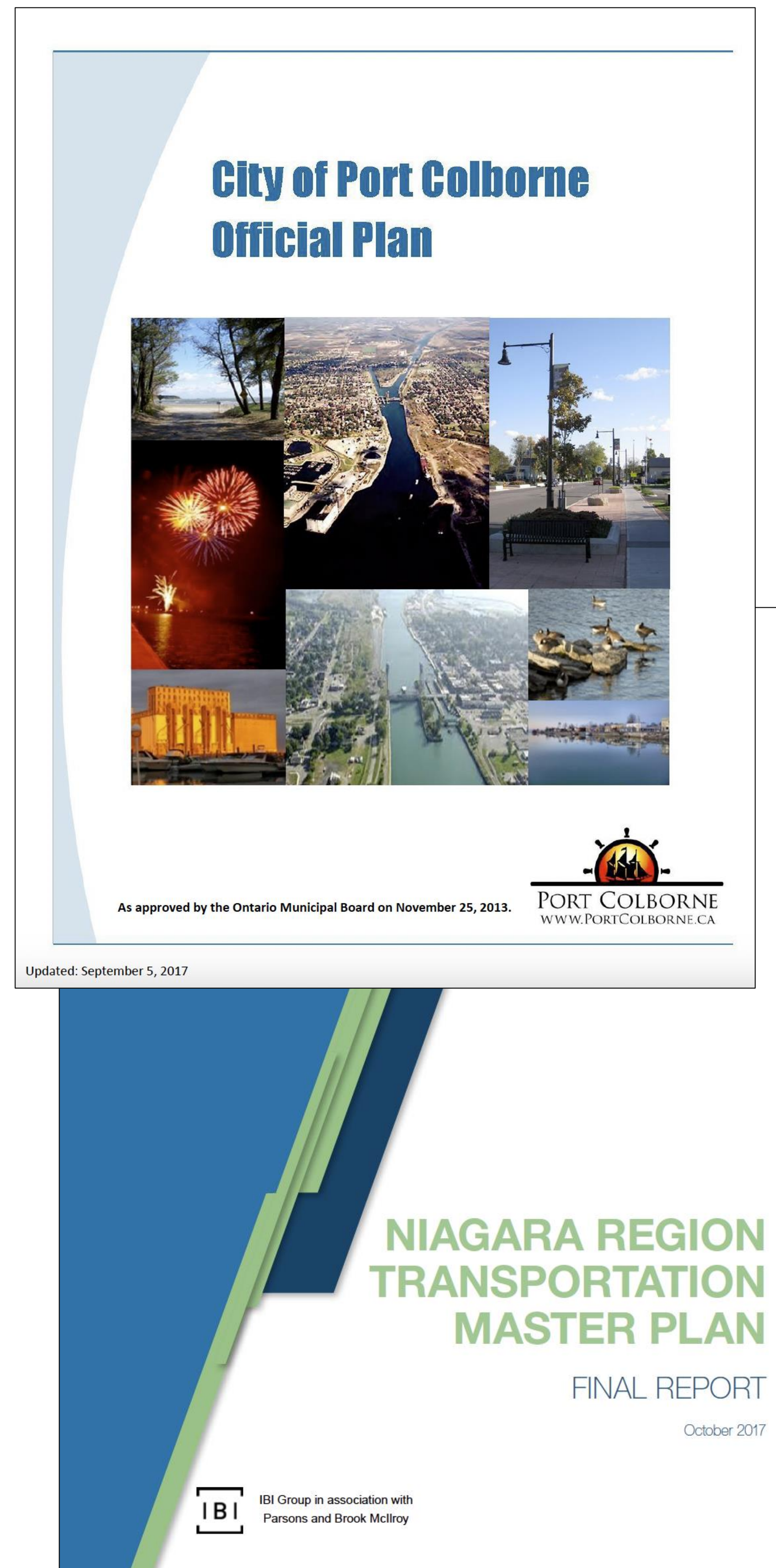


This project will review AT opportunities throughout the City of Port Colborne

- Port Colborne is located at the south end of the Welland Canal, on Lake Erie
- 2021 demographics for the City identify a population of 20,033, representing a 9.4% increase from 2016
- The average age within the City is 47.2, up 0.7 from 2016, indicating that the growth experienced has had little effect on in age demographics

STAGE 1 – INFORMATION GATHERING AND BACKGROUND MATERIAL REVIEW

- Site visit to identify city's existing AT facilities and infrastructure
- Establishment of Overarching Vision and Principles of the ATMP
- Review of City and Regional documents to provide an understanding of existing policies and objectives to better develop an AT network that meets the needs of the community.

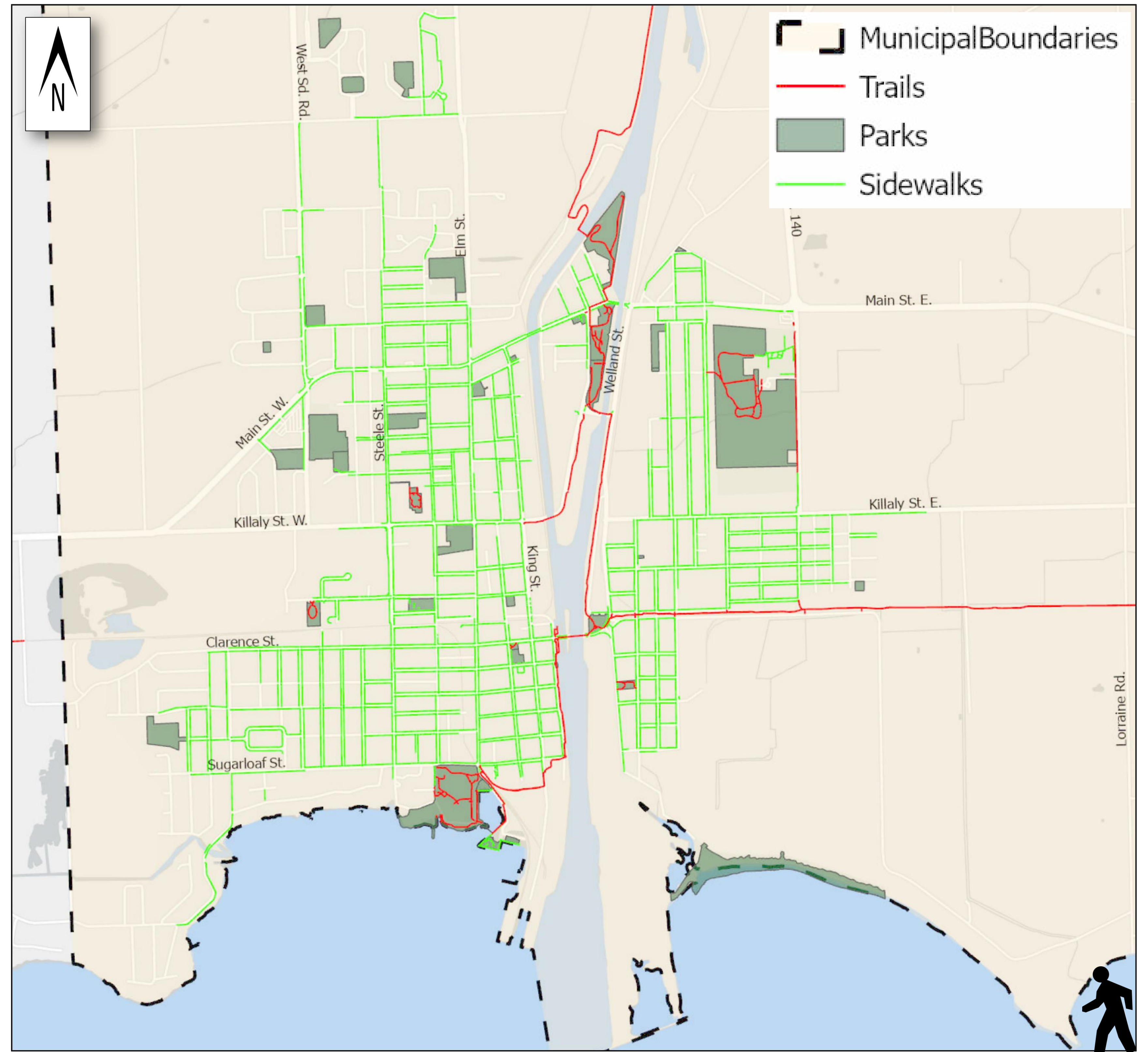


STAGE 1 – EXISTING CONDITIONS

ACTIVE TRANSPORTATION – WALKING

Key Study Area Characteristics

- Well connected sidewalk network within the downtown core
- Sidewalk network provides pedestrian access to the majority of parks within Port Colborne
- Approximately 124.3 km of sidewalks maintained by the City
- Approximately 25.5 km of trails maintained by the City
- The Friendship Trail runs east-west, with the western limits in Port Colborne and the eastern limits in Fort Erie
- The Welland Canal Trail runs north-south, with the southern limits in Port Colborne and the northern limits in St. Catharines

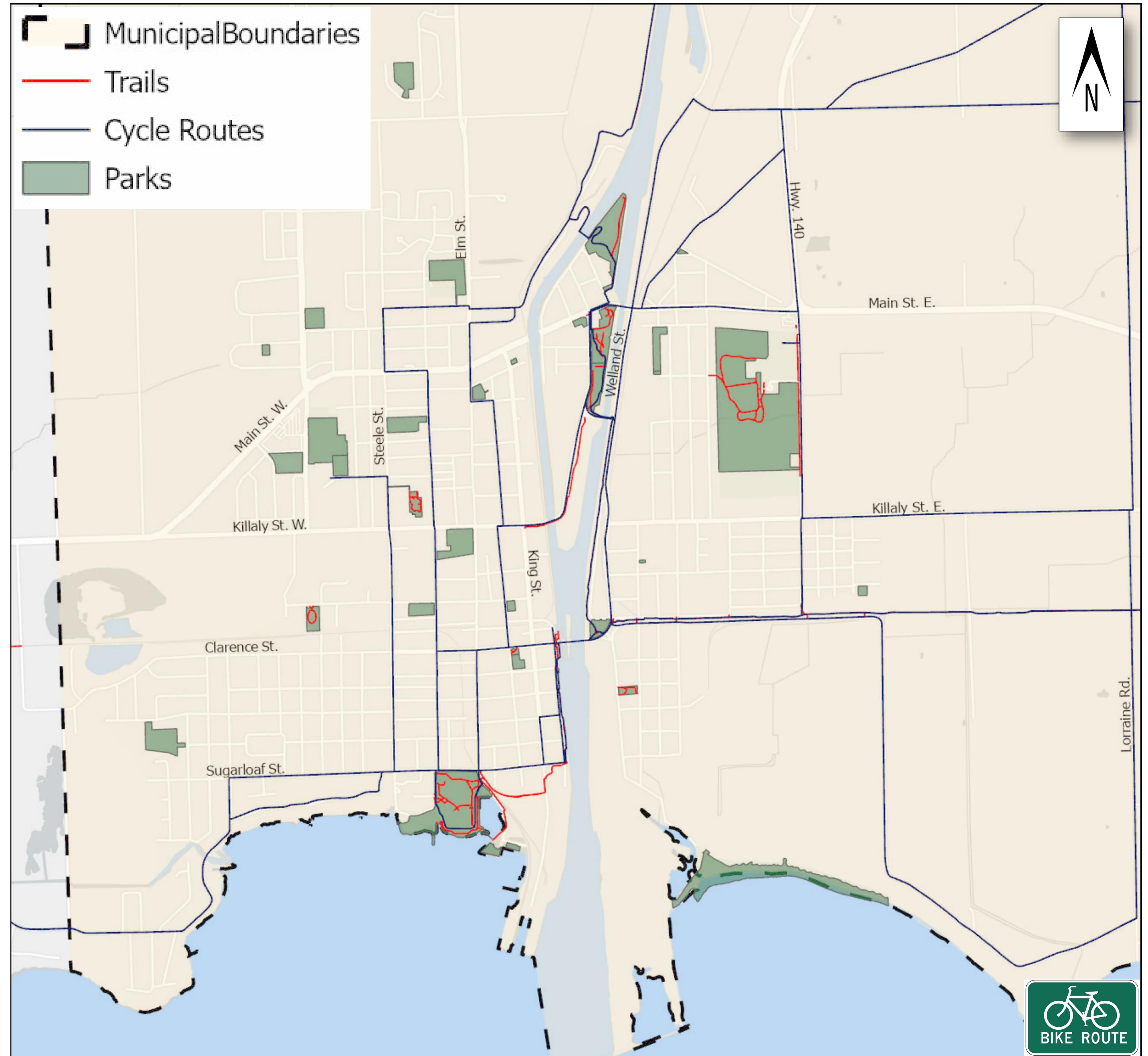


STAGE 1 – EXISTING CONDITIONS

ACTIVE TRANSPORTATION – CYCLING

Key Study Area Characteristics

- Typical cycling facilities include on-road shared cycling route, as well as multi-use trails
- Cycling is permitted on the Friendship Trail and Welland Canal Trail discussed under the existing conditions walking facilities
- Lack of connection to parks on the north and west sides of the city
- Approximately 641.6 km of cycling routes maintained by the City
- The existing AT network is organized around the Welland Canal bridges due to the limitations in east-west connectivity imposed by the waterway

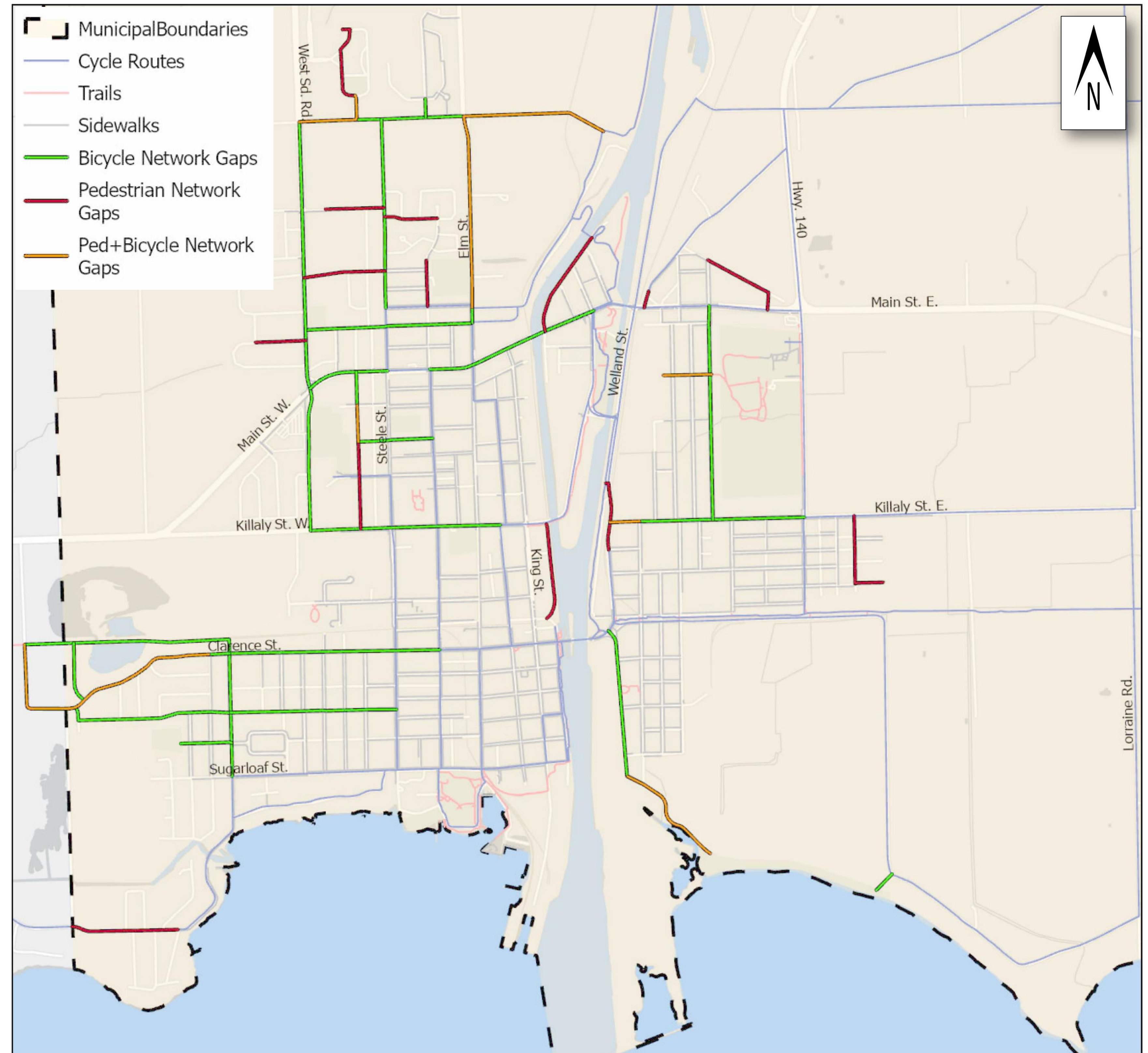


STAGE 1 – EXISTING CONDITIONS

ACTIVE TRANSPORTATION – NETWORK GAPS

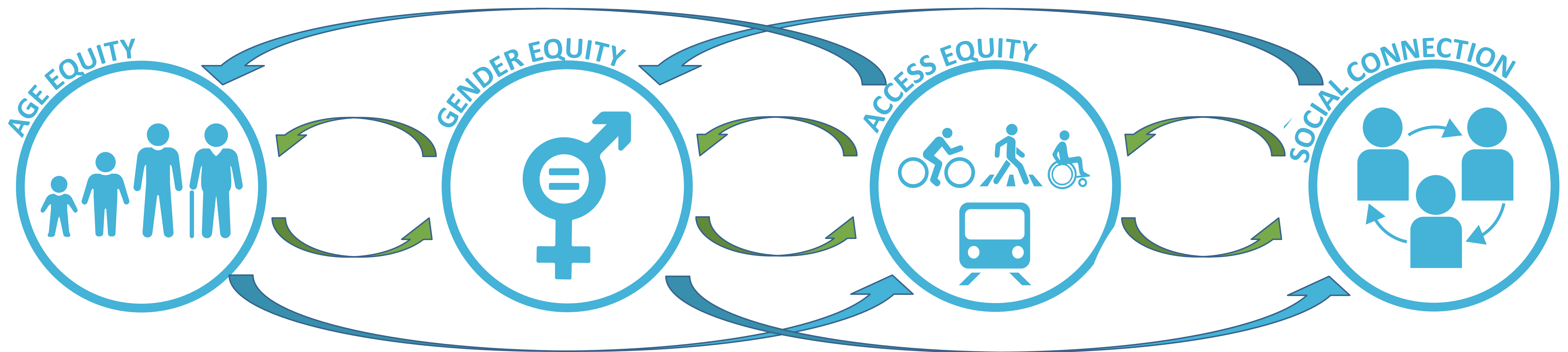
Key Study Area Issues

- No connectivity to Nickel Beach Park on Lake Erie
- No connectivity to the Gord Harry Conservation Trail west of City limits
- Providing additional connectivity to neighborhood parks
- Extension and formalization of existing trails, paths, and desire lines
- Greater connectivity needed within downtown core to eliminate indirect travel routes
- Improve connectivity to the Welland Canal bridges to maintain east-west connectivity
- Providing greater connectivity to Municipal and Regional facilities outside of the downtown core



STAGE 2 – AT NETWORK IDENTIFICATION AND ASSESSMENT

- Network identification of key origin-destination locations within study area limits to identify desired corridors and connections;
- Stakeholder Consultation and Visioning Workshop;
- Prepare and Submit Report Structure with Existing Conditions Assessment.



Vision Statement

“Port Colborne will strive to develop an all-ages and all-seasons active transportation network that supports the vibrancy of Port Colborne and facilitates social connectivity. The active transportation network will attract locals, newcomers, and visitors to safely and comfortably access shopping, jobs, education and the area's natural environment using an intuitive and connected active transportation network. Port Colborne's network will anticipate the transportation needs of future generations so that Port Colborne is vibrant and successful for another century.”

STAGE 2 – STAKEHOLDER ENGAGEMENT

PUBLIC ENGAGEMENT

Public Engagement Survey

- Our Public Engagement Survey went live on August 1, 2023 and is comprised of 13 questions
- Access to the survey is provided via the City's website or by scanning the QR Code provided on this board. Hard copies of the survey can also be filled out at various locations within the City
- Responses to the survey will be used to gain an understanding of the existing usage of active transportation facilities and to identify residents priorities which will be used to provide guidance regarding the most beneficial upgrades to the existing AT network



Public Information Centre

This Public Information Centre is being used to inform the community of the ATMP goals and objectives, the ATMP process, and to obtain additional input from the community.

STAGE 3 – NETWORK ANALYSIS

Network analysis to identify the most desired corridors and connections in the community for active transportation users, drawing on origin-destination data to identify links “as the crow flies”. This exercise provides insight into desired links and helps identify routes for new or enhanced facilities.

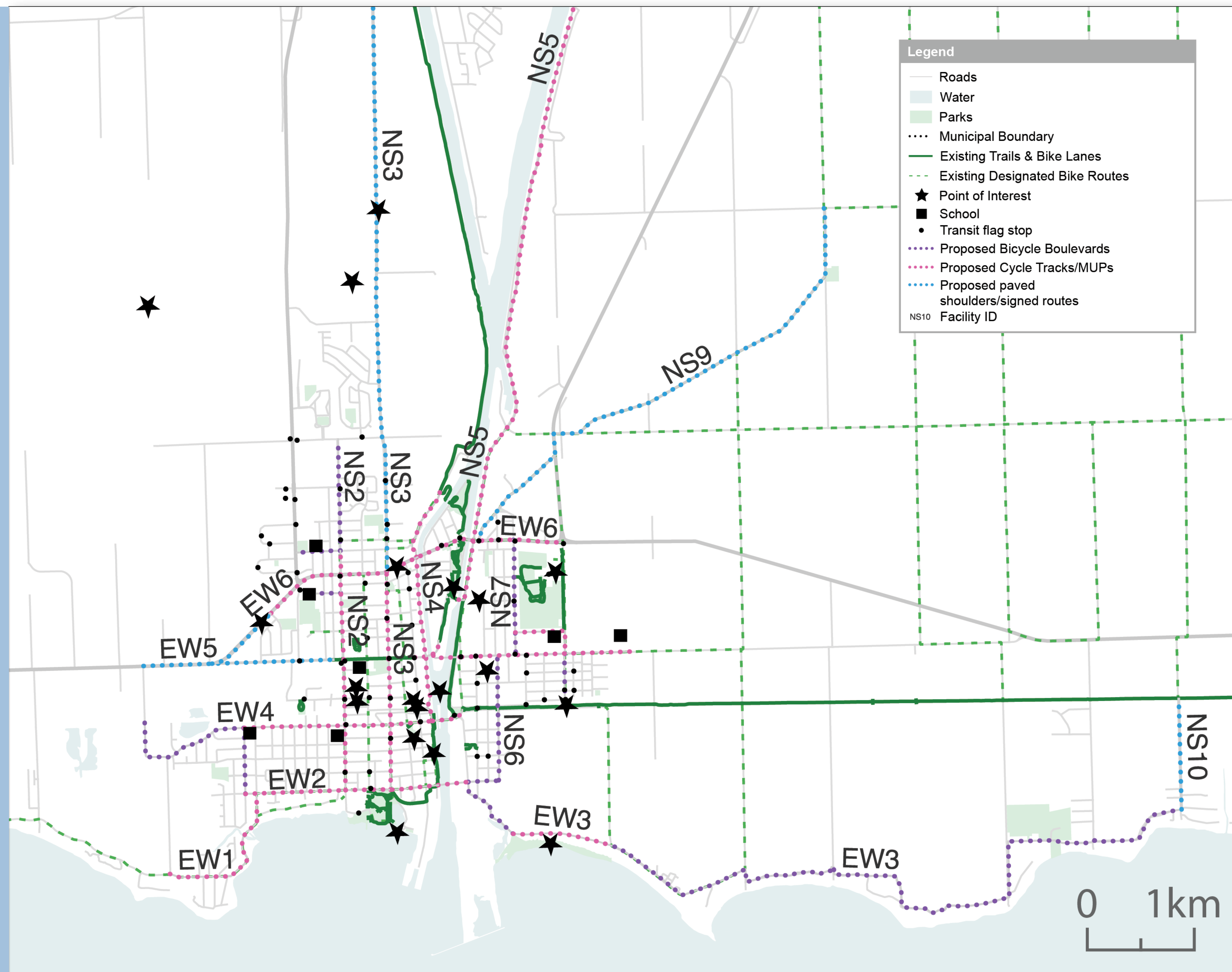
Gap assessment and networking exercise were used to compare the existing AT network and infrastructure with the results of the network analysis. In doing so we established missing links, quality gaps, network density issues, and barriers with a focus on the desired origin-destination routes.



Development and refinement of the proposed 10-year active transportation plan via assessment criteria, review of options and identification of recommended options. Recommendations for the AT network will be broken down in an implementation plan over the next 10 years providing prioritization in terms of high, medium, and low priority.

STAGE 3 – NETWORK ANALYSIS

- Make recreational trails accessible for more of the town's population to walk and cycle and build on the great facilities that already exist
- Make walking and cycling to school easier and safer for all students
- Connect the residential and commercial areas in Port Colborne so that residents and workers can commute, run errands, shop, dine and visit friends and family without needing to drive



STAGE 4 – FINAL ACTIVE TRANSPORTATION MASTER PLAN AND FINAL COUNCIL PRESENTATION

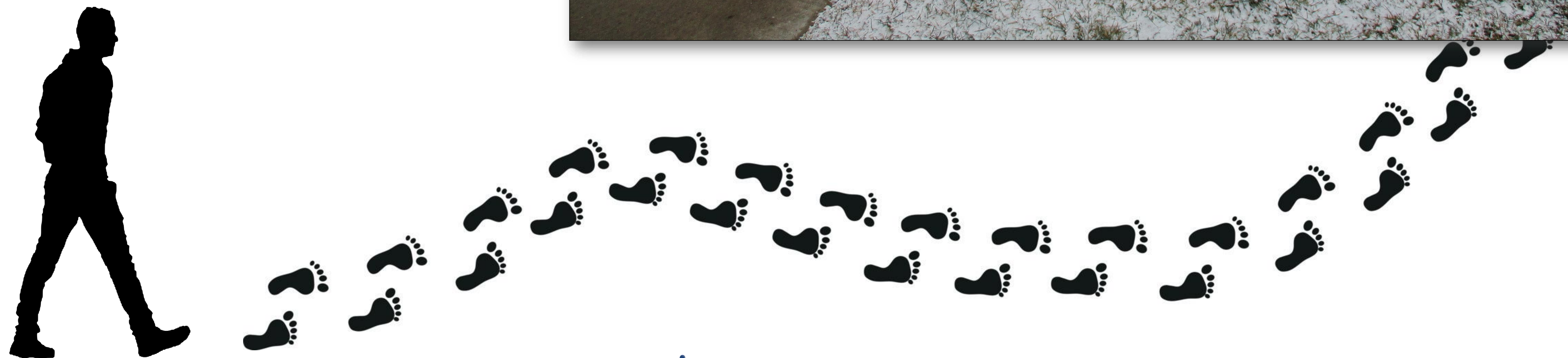
- Prepare and Refine the Draft ATMP into the Pre-Final and Final Acceptance of Report
- Presentation to Council
- Project Closeout and Final Document Handover



NEXT STEPS

Next steps for the project include:

- Preparation and submission of the Existing Conditions Assessment
- Compiling and addressing input/comments provided by residents through the PIC
- Prepare discussion points for ATAC Meeting #2 and Meeting #3
- Preparation of the Draft ATMP



YOUR INPUT

Following this PIC, the project team will:

- Review and respond to comments received prior to **September 5, 2023**
- Include stakeholder and public feedback in evaluation criteria and solutions
- Evaluate and select a Technically Preferred Solution
- Evaluate alternative design concepts and recommend a preferred design
- Present findings and recommended design to City staff for direction



Your Input is Important to Us!

Thank you for participating in the Public Information Centre. We welcome your comments. Information is being collected in accordance with the *Municipal Freedom of Information and Protection of Privacy Act*. With the exception of personal information, all comments will become part of the public record. If you have any questions, comments, require additional information, wish to be added to the project contact list, or have accessibility requirements in order to participate in this project, please contact one of the project team members listed below:

Adam Motchka
City of Port Colborne

Project Manager / Infrastructure

Tel: 416-436-0910

Email: adam.motchka@portcolborne.ca



Mehemed Delibasic, M.Sc., P.Eng.
McIntosh Perry Consulting Engineers Ltd.

Consultant Project Manager

Tel: 647-463-7993

Email: m.delibasic@mcintoshperry.com