

DRAFT

**Stage 1 and 2 Archaeological Assessments
281 Chippawa Road
Parts 1–3, Plan 59R-6507
City of Port Colborne
Regional Municipality of Niagara
Part of Lot 25, Concession 2
Geographic Township of Humberstone
Former Welland County, Ontario**

Prepared for
Terry Graham
313-247 King Street
Alliston, ON L9R 1N4
Tel: (705) 994-3485

Licensed under
P.J. Racher
MHSTCI Licence #P007
PIF #P007-1223-2021
ARA File #2021-0141

17/12/2021

Supplementary Documentation

TABLE OF CONTENTS

1.0	SUPPLEMENTARY DOCUMENTATION	1
1.1	Detailed Site Location Information	1
2.0	SD MAPS	2

LIST OF SD MAPS

SD Map 1: Features of Potential with Site Information	2
SD Map 2: Locations of Identified Sites	3
SD Map 3: Field Methods with Site Information (Aerial Image)	4
SD Map 4: Field Methods with Site Information (Survey Plan)	5
SD Map 5: Site 1	6
SD Map 6: Site 2	7
SD Map 7: Site 3	8
SD Map 8: Site 6	9
SD Map 9: Site 7	10
SD Map 10: Sites 8, 11 and 12	11

1.0 SUPPLEMENTARY DOCUMENTATION

1.1 Detailed Site Location Information

In keeping with Section 7.6.1 of the 2011 *Standards and Guidelines for Consultant Archaeologists*, detailed site location information was not included within the project report. The previously identified archaeological sites falling within 300 m of the study area are shown in SD Map 1. The locations of the sites identified during the subject investigation appear in SD Map 2–SD Map 4, and detailed views of the assessment results are presented in SD Map 5–SD Map 10. The GPS coordinates for the sites appear in SD Table 1. These data should be excluded from the Ontario Public Register of Archaeological Reports.

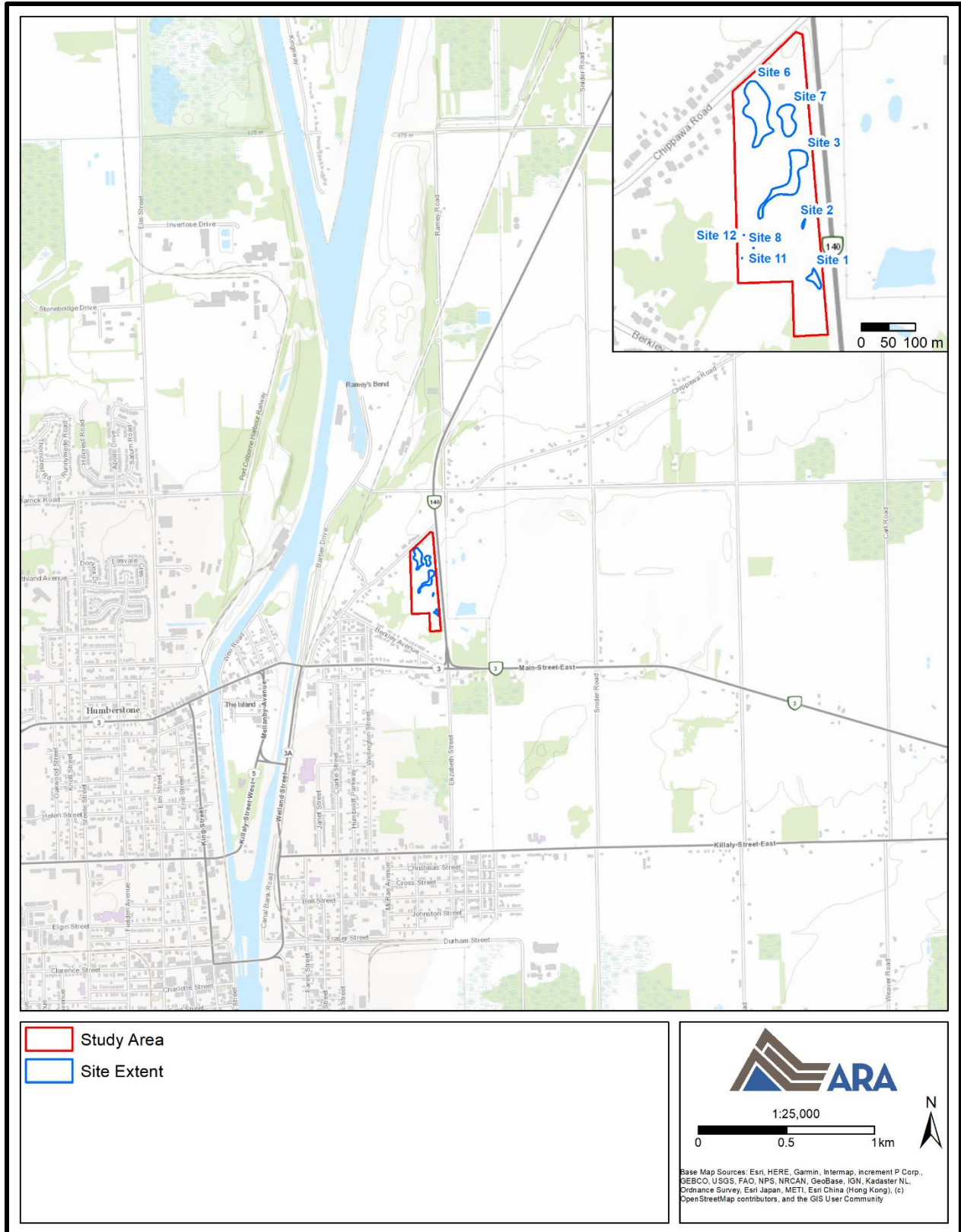
SD Table 1: GPS Co-ordinates

Site Identifier	Point Location	UTM Zone	Easting (m)	Northing (m)
Site 1 (AfGt-331)	Centre	17	644,061	4,751,668
	North	17	644,057	4,751,686
	East	17	644,072	4,751,652
	South	17	644,070	4,751,649
	West	17	644,044	4,751,667
Site 2 (AfGt-332)	Centre	17	644,039	4,751,768
	North	17	644,042	4,751,778
	South	17	644,037	4,751,760
	West	17	644,037	4,751,767
Site 3 (AfGt-333)	Centre	17	644,018	4,751,840
	North	17	644,030	4,751,903
	East	17	644,047	4,751,888
	South	17	643,957	4,751,778
	West	17	643,980	4,751,831
Site 6 (AfGt-334)	Centre	17	643,951	4,751,978
	North	17	643,945	4,752,033
	East	17	643,984	4,751,943
	South	17	643,947	4,751,910
	West	17	643,928	4,751,975
Site 7 (AfGt-335)	Centre	17	644,012	4,751,959
	North	17	644,016	4,751,987
	East	17	644,024	4,751,955
	South	17	644,009	4,751,931
	West	17	643,989	4,751,972
Site 8	Centre	17	643,946	4,751,724
Site 11	Centre	17	643,925	4,751,705
Site 12	Centre	17	643,929	4,751,748

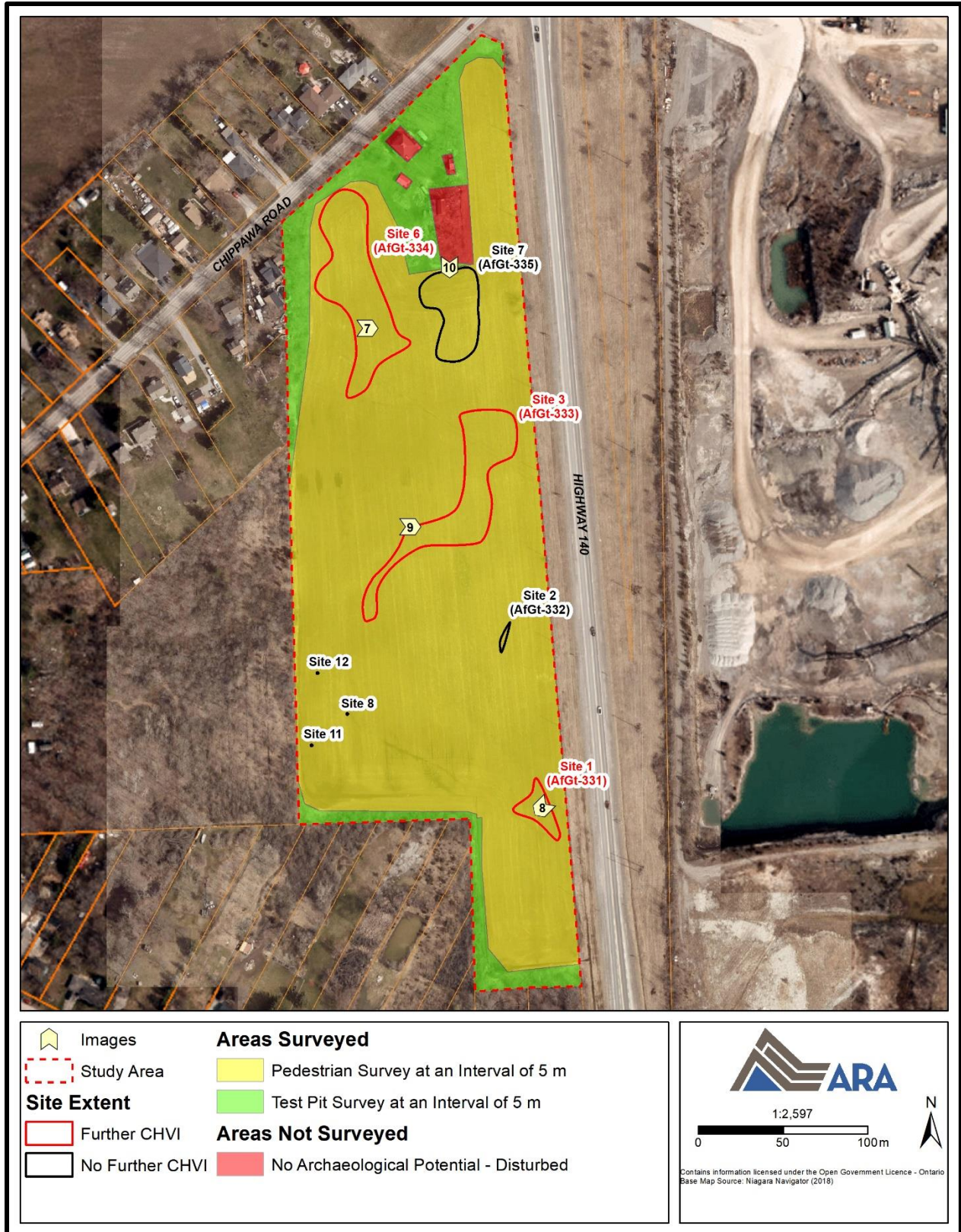
2.0 SD MAPS



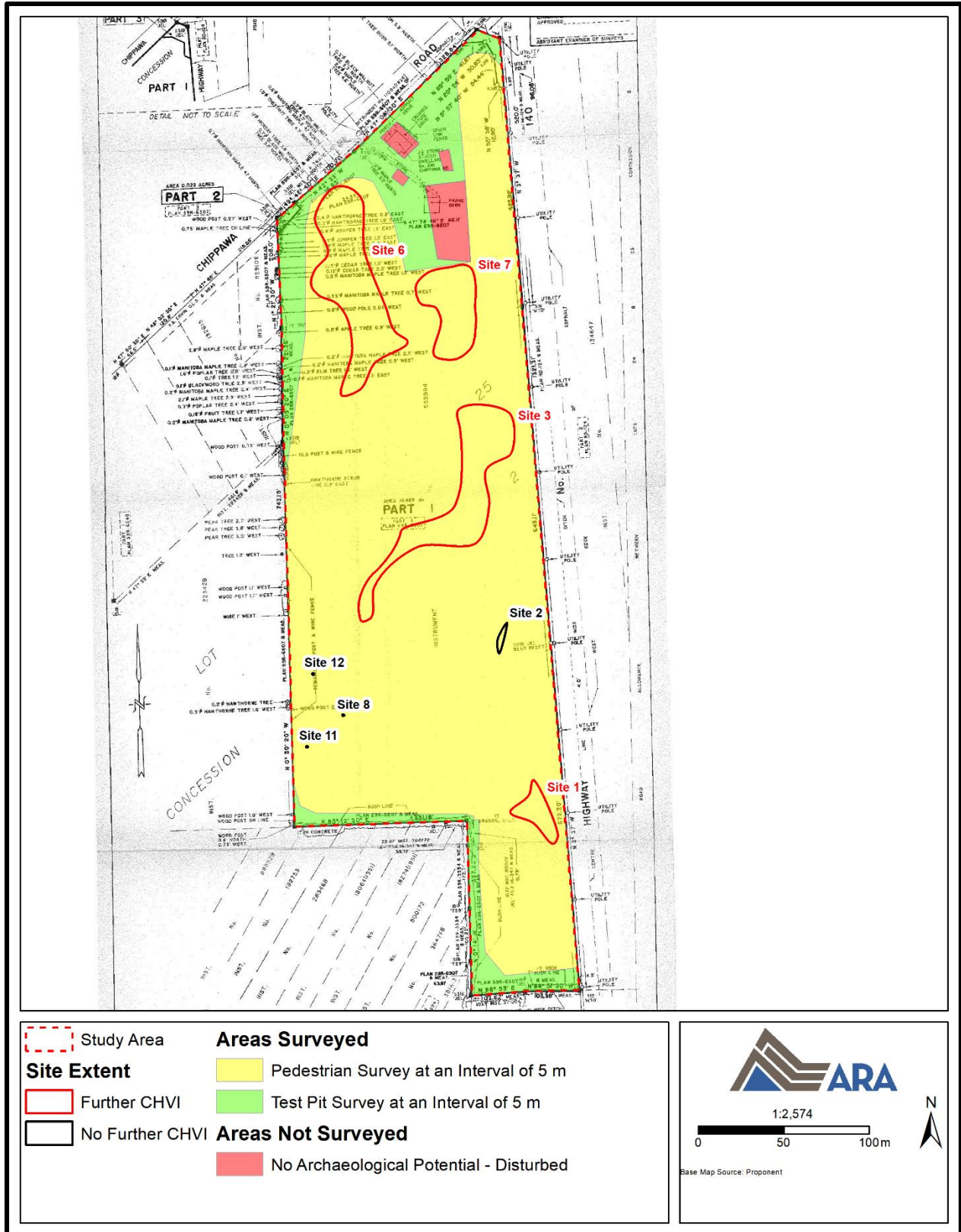
SD Map 1: Features of Potential with Site Information
(Produced under licence using ArcGIS® software by Esri, © Esri)



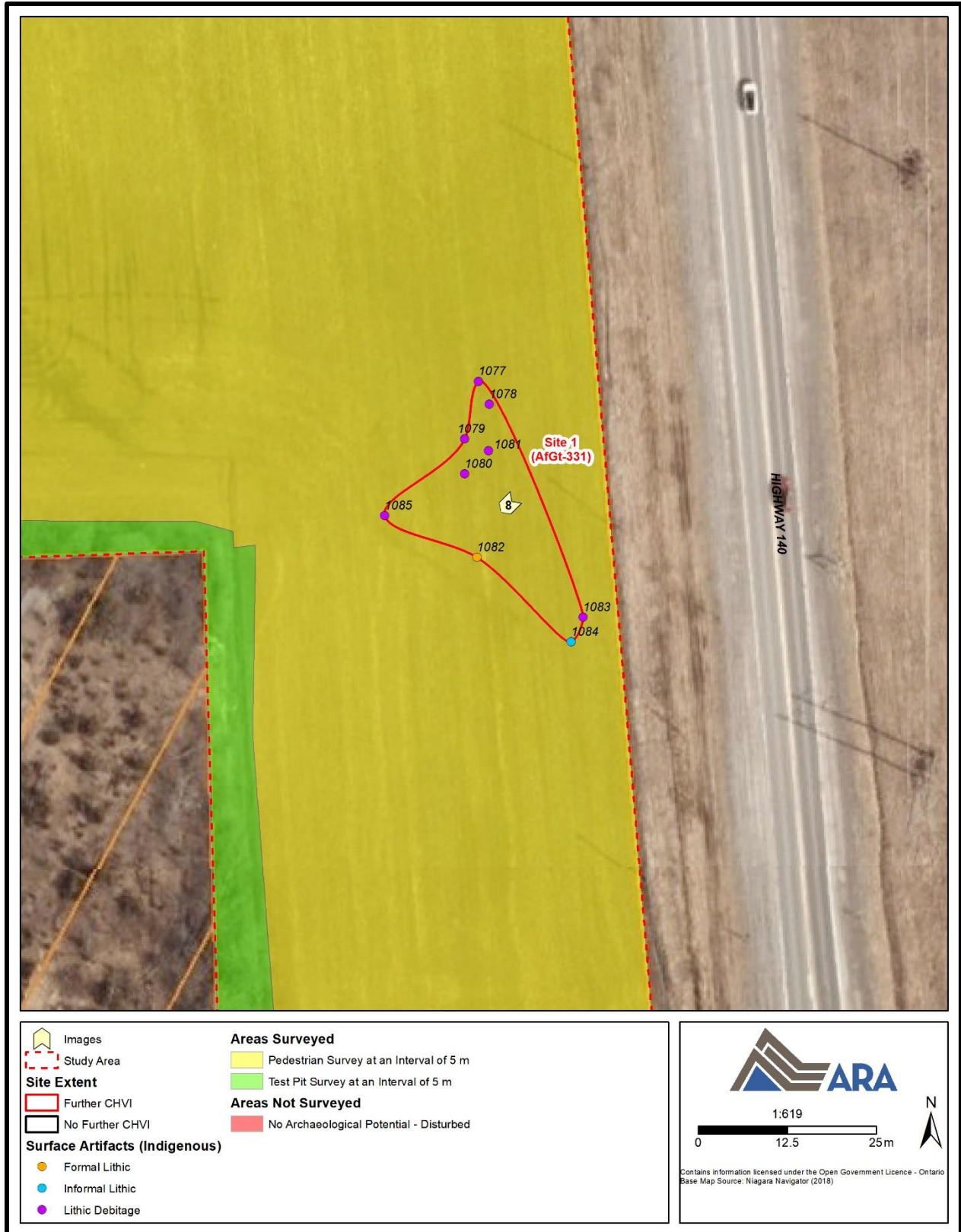
SD Map 2: Locations of Identified Sites
 (Produced under licence using ArcGIS® software by Esri, © Esri)



SD Map 3: Field Methods with Site Information (Aerial Image)
 (Produced under licence using ArcGIS® software by Esri, © Esri)



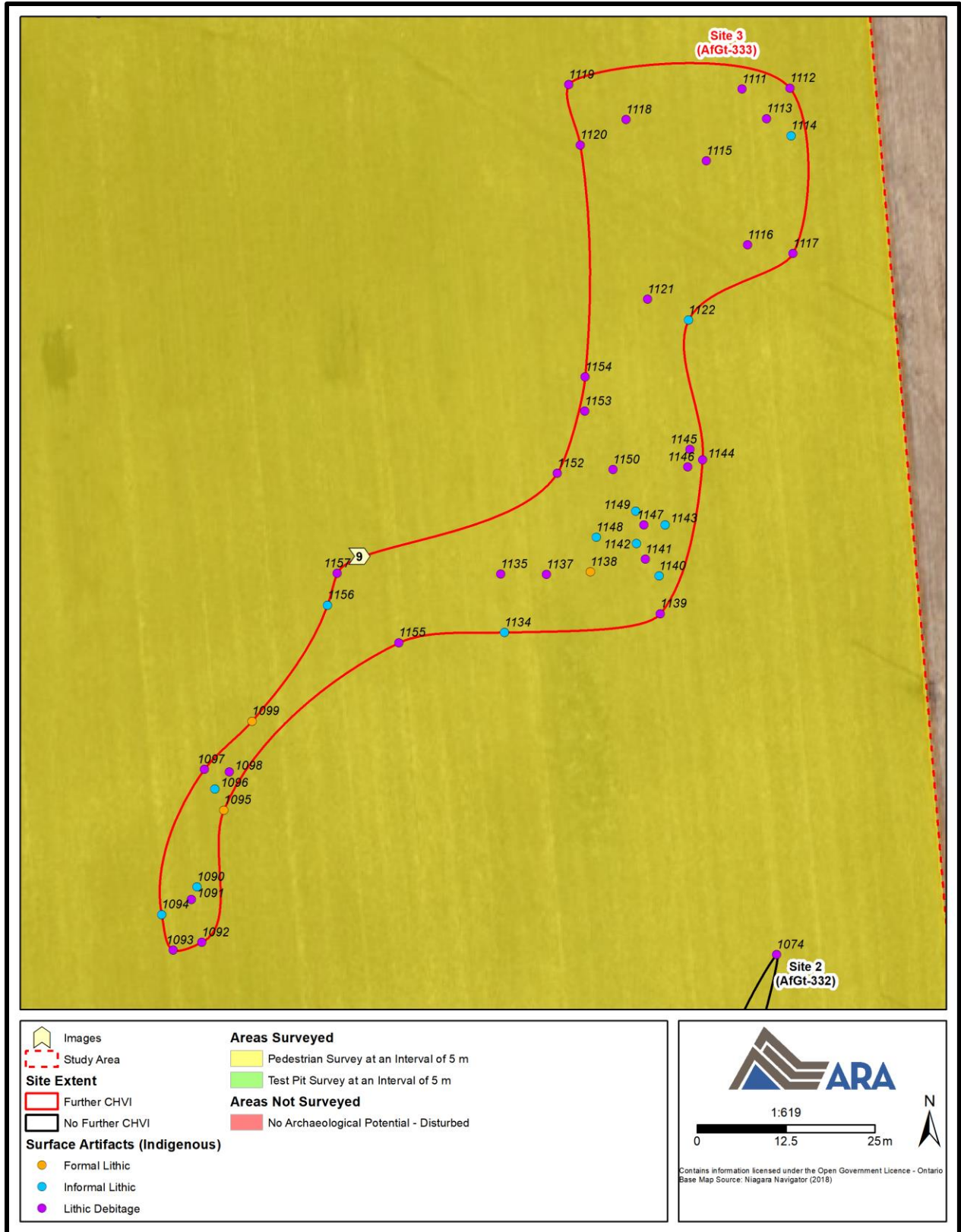
SD Map 4: Field Methods with Site Information (Survey Plan)
(Produced under licence using ArcGIS® software by Esri, © Esri)



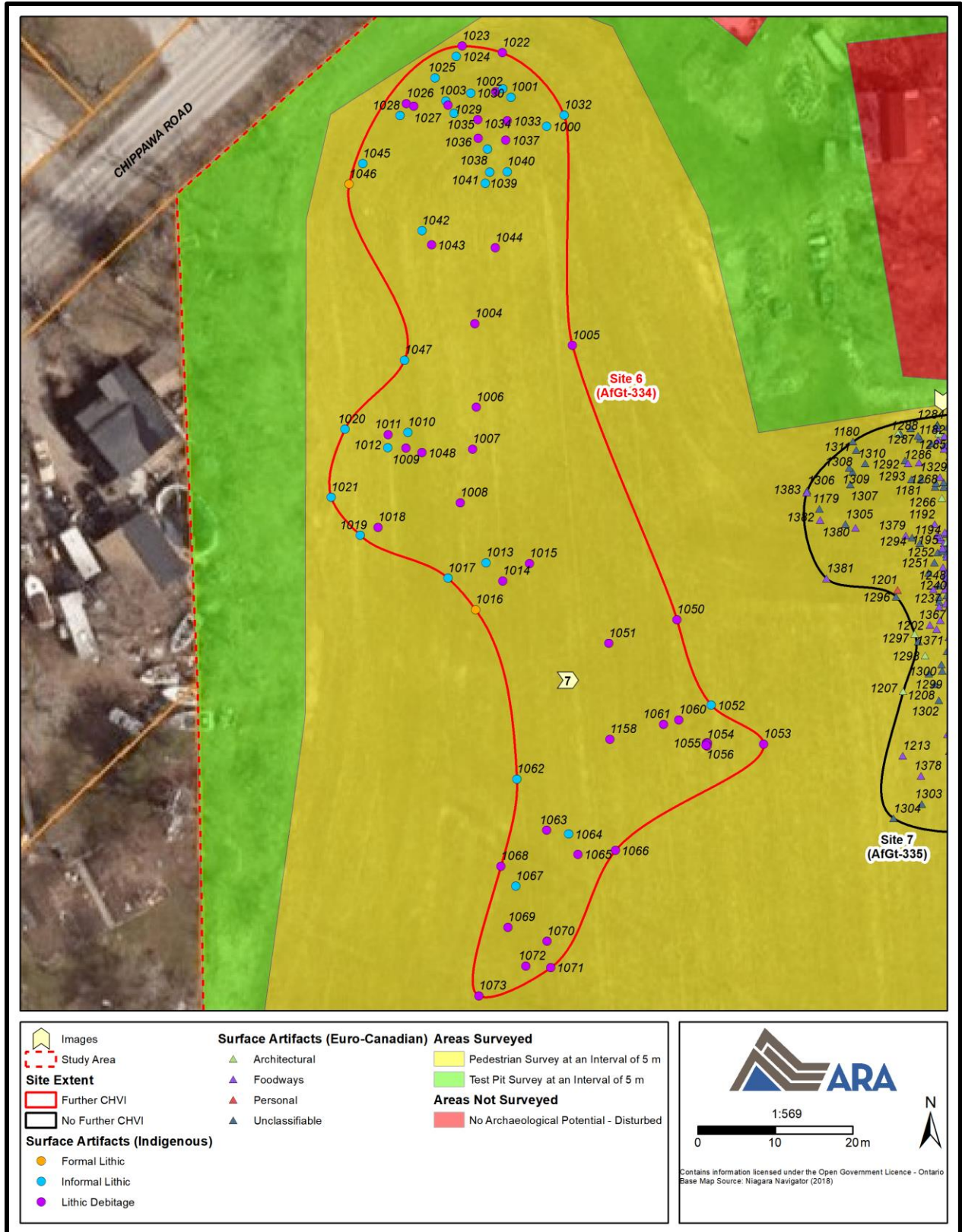
SD Map 5: Site 1
 (Produced under licence using ArcGIS® software by Esri, © Esri)



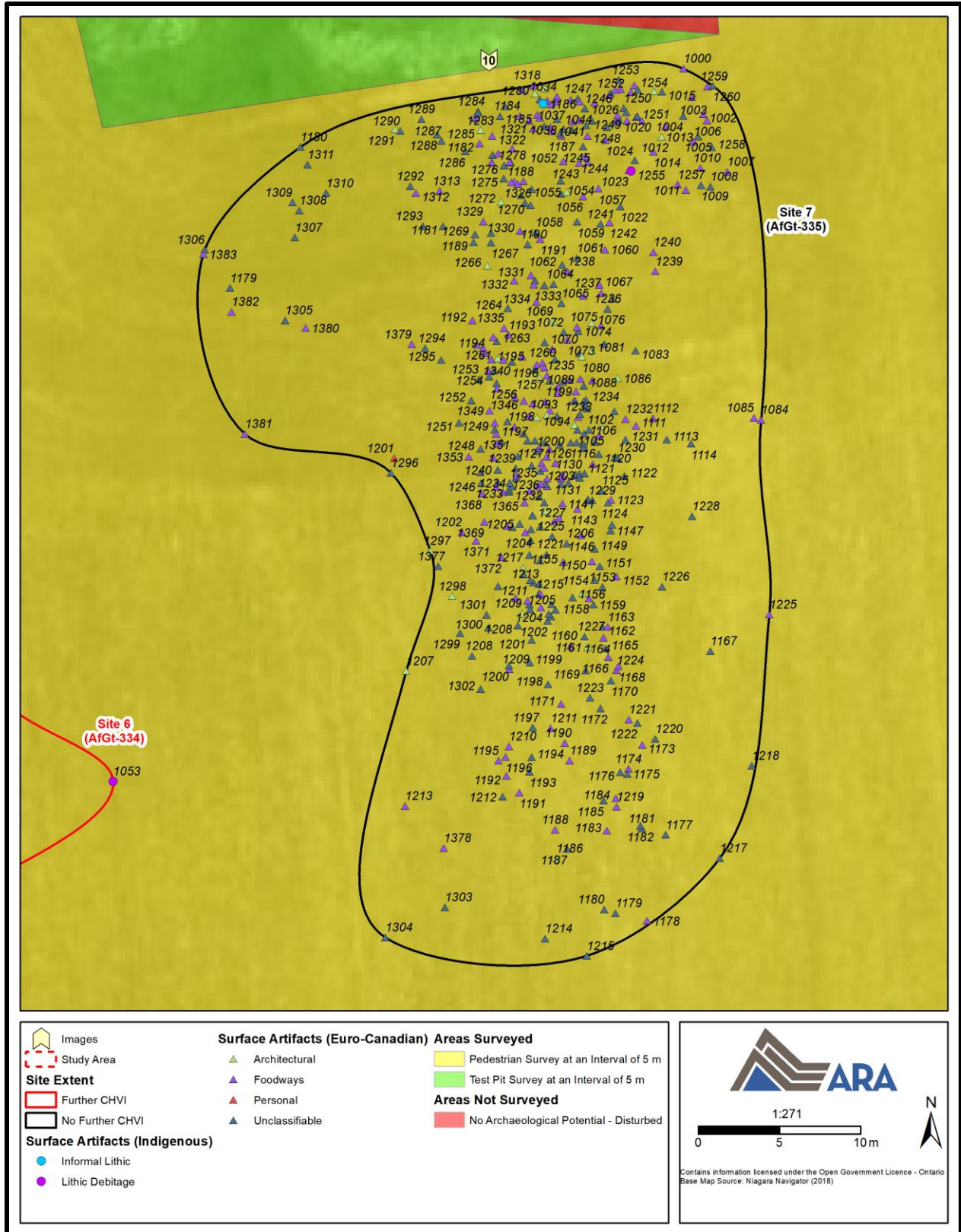
SD Map 6: Site 2
 (Produced under licence using ArcGIS® software by Esri, © Esri)



SD Map 7: Site 3
 (Produced under licence using ArcGIS® software by Esri, © Esri)



SD Map 8: Site 6
 (Produced under licence using ArcGIS® software by Esri, © Esri)



SD Map 9: Site 7
 (Produced under licence using ArcGIS® software by Esri, © Esri)



SD Map 10: Sites 8, 11 and 12
 (Produced under licence using ArcGIS® software by Esri, © Esri)